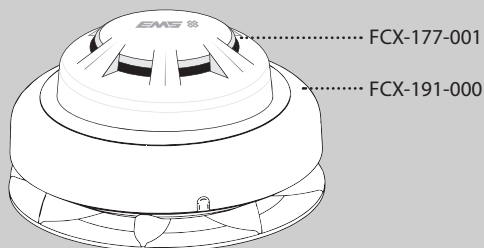


## Combined Sounder/Detector/Visual Indicator Installation Guide

Example shown:



Part no	Description	CPR
FCX-174-001	Multisensor Smoke Detector Only	[1]
FCX-175-001	Heat A1R Detector Only	[2]
FCX-176-001	Heat CS Detector Only	[2]
FCX-177-001	Optical Smoke Detector Only	[3]
FCX-191-000	Sounder/Detector Base Only	[4]
FCX-191-100	Sounder/Detector/Clear Visual Indicator Base Only	[4]
FCX-191-200	Sounder/Detector/Red Visual Indicator Base Only	[4]

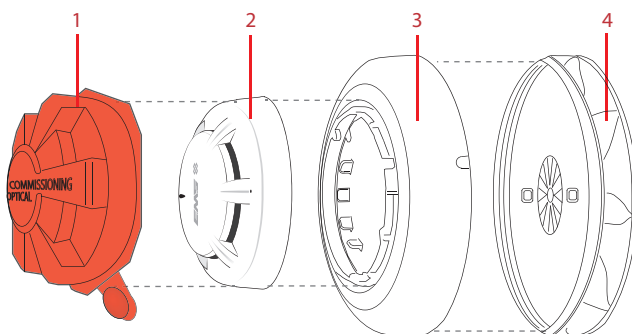
See the Specification section for compliance information.

### 1 Pre installation

**!** Installation must conform to applicable local installation codes and should only be installed by a fully trained competent person.

- Ensure that the device is installed as per the site survey.
- The use of a non-metallic spacer should be considered if mounting the device on to a metal surface.
- Do NOT Press the Log On button on a pre-programmed device, as this will cause communication with the Control Panel to be lost. Should this happen, delete the device from the system and add it back on.
- This device contains electronics that may be susceptible to damage from Electrostatic Discharge (ESD). Take appropriate precautions when handling electronic boards.

### 2 Components

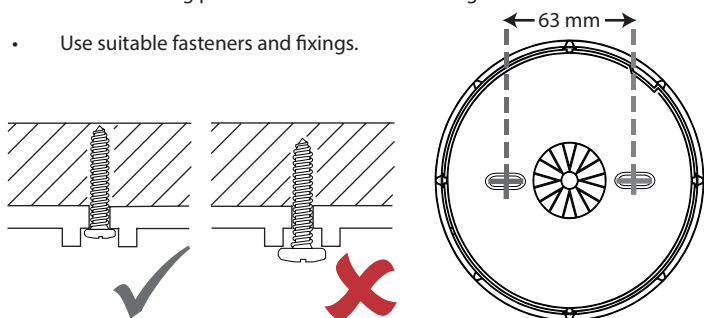


1 Dust cover, 2 Detector, 3 Wireless module, 4 Mounting plate

### 3 Fix mounting plate

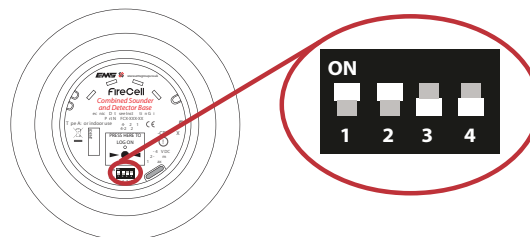
Remove the mounting plate by turning the device **ANTICLOCKWISE**, to release it from the mounting plate.

- Use both fixing positions to ensure a firm fixing.
- Use suitable fasteners and fixings.



### 4 Power device

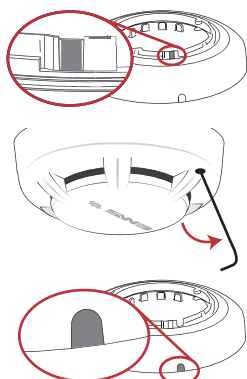
- When fitting / replacing batteries; observe correct polarity, using only specified batteries.
- Set switch 1 to the ON position to power the device. See the configuration section for other available switch settings.



- Once powered, reassemble the device.

### 5 Optional device locking

- To lock the detector into the wireless module, remove the cut out (*shaded*) section as shown.
- To unlock the detector, insert a 1.5 mm allen key and lever the allen key towards the outside of the device and turn the detector anticlockwise to release.
- The wireless module can also be locked into the mounting plate by removing the shaded section shown and fitting a 5/16 Phillips pan head screw.

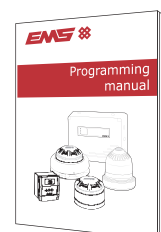


### 6 Configuration

The device's loop address is configured within the user interface's menu structure.

- Refer to the programming manual for full programming details.

FireCell = MK98  
Fusion = TSD062  
WZM = TSD143



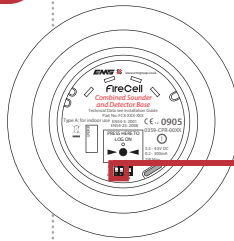
Free to download from [www.emsgroup.co.uk](http://www.emsgroup.co.uk)

## Configuration continued

### Device powering/Sounder volume (Set on wireless module)

Switches 1-2 on the 4 way switch are used to power the device and to change the sounder volume.

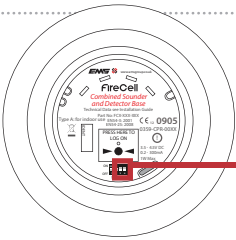
Default Setting: Supplied unpowered with high sounder volume.



SWITCHES 1 & 2	DEVICE POWERED?	SOUNDER VOLUME
ON  ON	✓	HIGH 87dB A (+/- 1dB)
ON  OFF	✓	LOW 74 dB A (+/- 1dB)
OFF  ON	✗	HIGH 87dB A (+/- 1dB)
OFF  OFF	✗	LOW 74 dB A (+/- 1dB)

### Sounder tone \* (Set on wireless module)

Switches 3-4 on the 4 way switch are used to configure the sounder tone.



SWITCHES 3 & 4	PRIMARY TONE	NEUR TYPE	TONE DESCRIPTION / APPLICATION	SECONDARY TONE	TONE TYPE	TONE DESCRIPTION / APPLICATION
ON  OFF	1	—	970 Hz	18	—	2400 Hz
OFF  ON	2		800 Hz / 970 Hz at 2 Hz	1	—	970 Hz
ON  ON	3		800 Hz to 970 Hz at 1 Hz	1	—	970 Hz
OFF  OFF	5		970 Hz, 0.5 s / 630 Hz, 0.5 s	4	—	970 Hz 1 s OFF / 1 s ON

Default setting: primary tone 5

## IMPORTANT

- Remove dust cover before use.
- The device should be tested upon installation and in accordance with local requirements.
- Testing should only be carried out by a fully trained competent person.

- The manufacturer recommends regular functional testing of at least once per annum or in accordance with local codes of practice.
- Cleaning and repairs must be undertaken by the manufacturers authorised representative.
- Do not open the case to clean inside the detector.

## Specification

<b>Operating temperature</b>	-10 to +55 °C
<b>Storage temperature</b>	5 to 30 °C
<b>Humidity</b>	0 to 95% noncondensing
<b>Supply</b>	3x AA alkaline (Panasonic LR6AD Powerline / Varta 4006 Industrial) & 3 x C alkaline (Panasonic LR14AD Powerline / Varta 4014 Industrial)

**CAUTION!**  
Fitting of an incorrect battery type invalidates the product certification and may result in poor performance.

<b>IP rating</b>	IP23
<b>Operating frequency</b>	868 MHz
<b>Output transmitter power</b>	Auto adjusting 0 to 14 dBm (0 to 25 mW)
<b>Signalling protocol</b>	X
<b>Sounder output</b>	87 dB(A) at 1 m (as dispatched). Low setting reduces volume by 13 dB.

Refer to the sounder data document (MK187) for full details.  
Free to download from [www.emsgroup.co.uk](http://www.emsgroup.co.uk)

<b>Dimensions (Ø x D)</b>	146 x 53 mm (without detector) 146 x 89 mm (with smoke detector) 146 x 94 mm (with heat detector) 146 x 100 mm (with multisensor detector)
<b>Weight</b>	0.70 kg (with detector)
<b>Location</b>	Type A: For indoor use

## Regulatory information

<b>Manufacturer</b>	Carrier Manufacturing Poland Sp. z o.o. Ul. Kolejowa 24. 39-100 Ropczyce, Poland
<b>Year of manufacture</b>	See devices serial number label
<b>Certification</b>	CE20 [1] CE10 [2] [3] CE12 [4]
<b>Certification body</b>	0905
<b>CPR DoP</b>	See part listing for associated products: [1]0905-CPR-202126, [2]0359-CPR-0015, [3]0359-CPR-0017 & [4]0359-CPR-0121
<b>Approved to</b>	See part listing for associated products: EN54-3:2001. Incorporating Amendments Nos. 1 and 2. Fire detection and fire alarm systems. Part 3: Fire alarm devices - Sounders. [4]  EN54-5:2017+A1:2018. Incorporating Amendment No. 1. Fire detection and fire alarm systems. Part 5: Heat detectors - Point Detectors. [2]  EN54-7:2018. Incorporating Amendment No. 1. Fire detection and fire alarm systems. Part 7: Smoke detectors - Point detectors using scattered light, transmitted light or ionization. [1][3]  EN54-25:2008. Incorporating corrigenda September 2010 and March 2012. Fire detection and fire alarm systems. Part 25: Components using radio links. [4]
<b>European Union Directives</b>	EMS declares that this device is in compliance with Directive 2014/53/EU. The full text of the EU declaration of conformity is available at the following internet address: <a href="http://www.emsgroup.co.uk">www.emsgroup.co.uk</a>



2012/19/EU (WEEE directive): Products marked with this symbol cannot be disposed of as unsorted municipal waste in the European Union. For proper recycling, return this product to your local supplier upon purchase of equivalent new equipment, or dispose of it at designated collection points. For more information see [www.recyclethis.info](http://www.recyclethis.info)  
Dispose of your batteries in an environmentally friendly manner according to your local regulations.