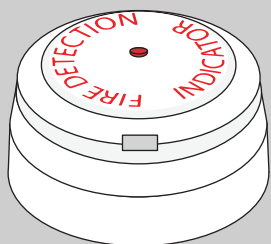


Wireless Remote Indicator Module Installation Guide



Example shown:
FCX-178-001

Part no	Description
FCX-178-001	Wireless Remote Indicator Module
FCZ-170-111	Remote Indicator Wireless Module Only
117261	Remote Indicator Only

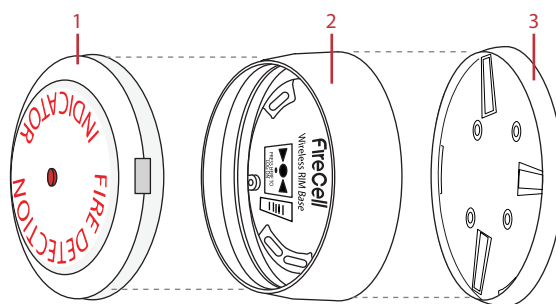
1 Pre installation



Installation must conform to applicable local installation codes and should only be installed by a fully trained competent person.

- Ensure that the device is installed as per the site survey.
- The use of a non-metallic spacer should be considered if mounting the device on to a metal surface.
- Do NOT Press the Log On button on a pre-programmed device, as this will cause communication with the Control Panel to be lost. Should this happen, delete the device from the system and add it back on.
- This device contains electronics that may be susceptible to damage from Electrostatic Discharge (ESD). Take appropriate precautions when handling electronic boards.

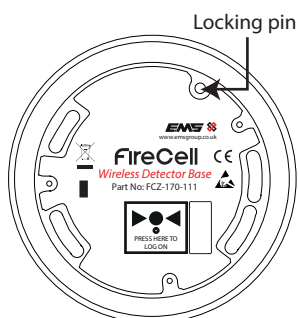
2 Components



1 Remote indicator, 2 Wireless module, 3 Mounting plate

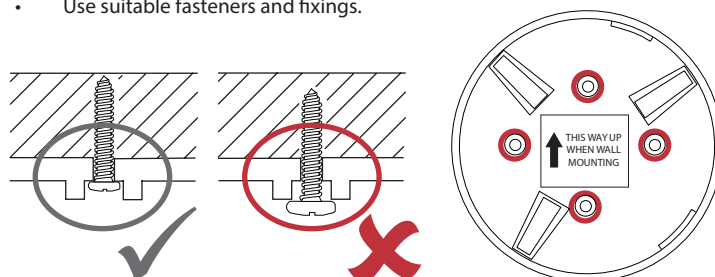
3 Disassemble device

- First disengage the remote indicator from the wireless module by turning it anticlockwise. This exposes the wireless module's locking pin as shown.
- Disengage the mounting plate by turning the wireless module anticlockwise, whilst pressing down the locking pin. handling electronic boards.



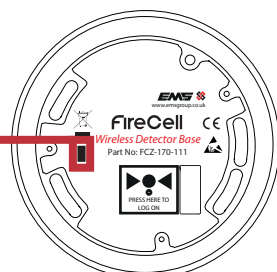
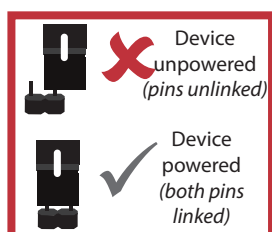
4 Fix mounting plate

- When wall mounting, ensure the mounting plate is fitted in the orientation shown.
- Use all four mounting holes to ensure a firm fixing.
- Use suitable fasteners and fixings.



5 Power device

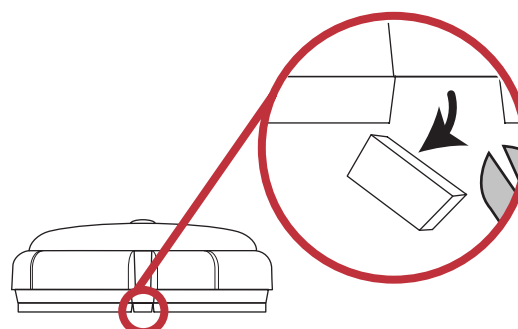
- When fitting / replacing batteries; observe correct polarity, using only specified batteries.
- Connect the power jumper across the PIN header.



- Once powered, reassemble the device.

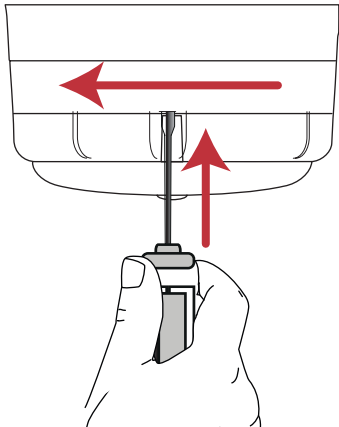
6 Optional locking

- To lock the remote indicator into the wireless module, remove the cut out section as shown.



6 Unlocking

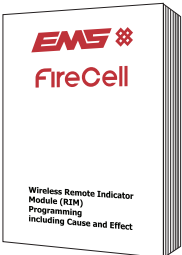
- To unlock the device, insert a flat bladed screwdriver into the release slot and turn the remote indicator anticlockwise to release, as shown.



7 Configuration

The device's loop address is configured within the user interface's menu structure.

- Refer to the wireless remote indicator programming instructions (*TSD115*) for full programming details.



Free to download from
www.emsgroup.co.uk


Specification

Operating temperature	-10 to +55 °C
Storage temperature	5 to 30 °C
Humidity	0 to 95% non-condensing
Supply	6x AA alkaline (<i>Panasonic LR6AD Powerline / Varta 4006 Industrial</i>)

CAUTION!
Fitting of an incorrect battery type invalidates the product certification and may result in poor performance.

IP rating	IP23
Operating frequency	868 MHz
Output transmitter power	Auto adjusting 0 to 14 dBm (<i>0 to 25 mW</i>)
Signalling protocol	X
Dimensions (Ø x D)	113 x 81 mm
Weight	0.40 kg
Location	Type A: For indoor use

Regulatory information

Manufacturer	KGS Manufacturing Poland Sp. z o.o. Ul. Kolejowa 24. 39-100 Ropczyce, Poland
Year of manufacture	See devices serial number label
Certification	 
DoP number	0359-CPR-00127
Approved to	EN54-25:2008. Incorporating corrigenda September 2010 and March 2012. Fire detection and fire alarm systems.
European Union Directives	EMS declares that this device is in compliance with Directive 2014/53/EU. The full text of the EU declaration of conformity is available at the following internet address: www.emsgroup.co.uk



2012/19/EU (*WEEE directive*): Products marked with this symbol cannot be disposed of as unsorted municipal waste in the European Union. For proper recycling, return this product to your local supplier upon purchase of equivalent new equipment, or dispose of it at designated collection points. For more information see www.recyclethis.info

Dispose of your batteries in an environmentally friendly manner according to your local regulations.