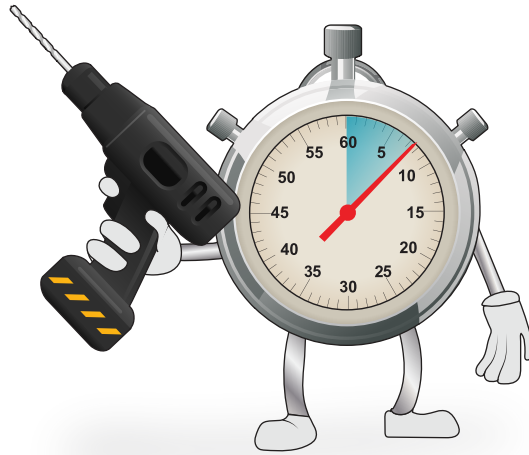


EMS

FireCell



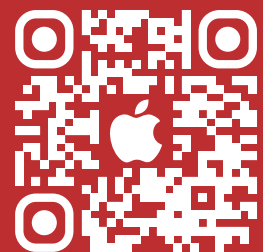
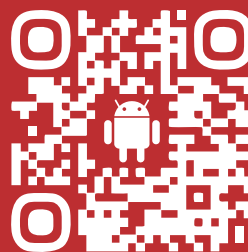
RADIO NETWORK COMMUNICATOR (RNC) *For Syncro/Syncro AS*

QUICK START GUIDE



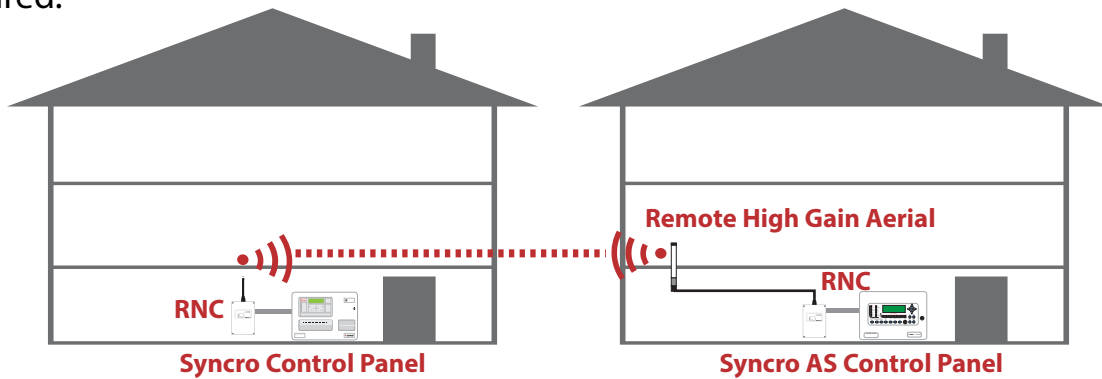
FireCell Guide

FREE mobile phone app

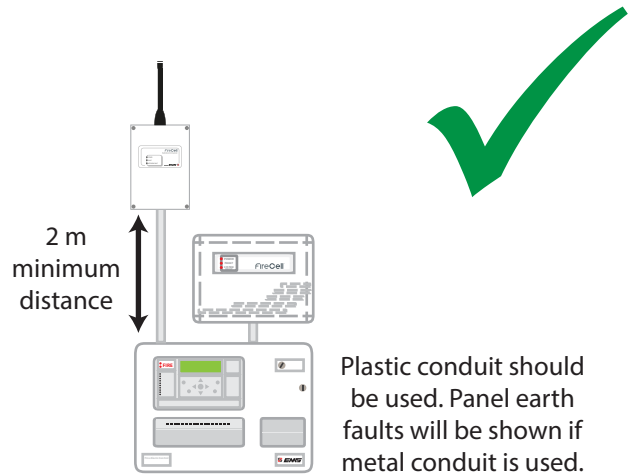
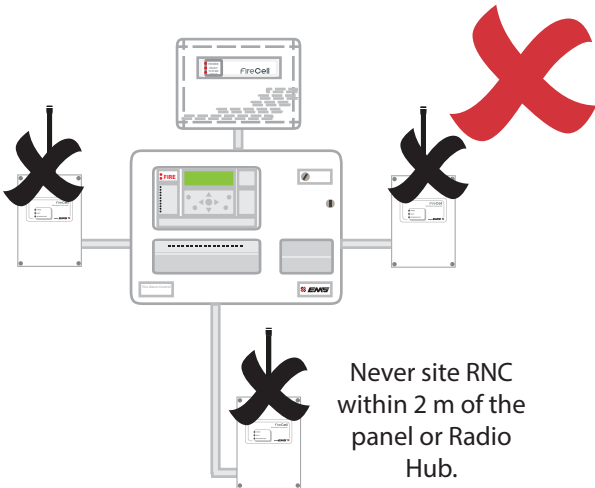
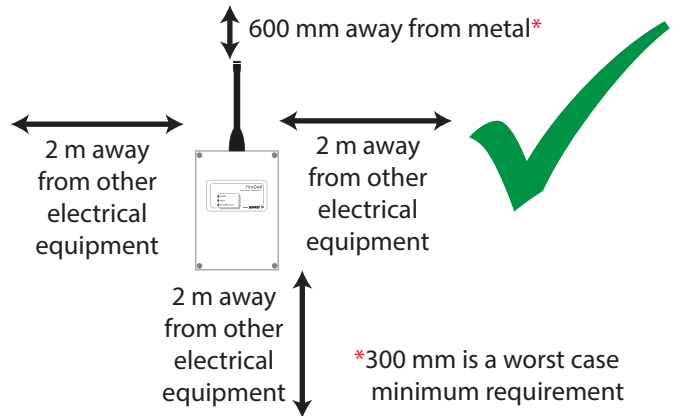
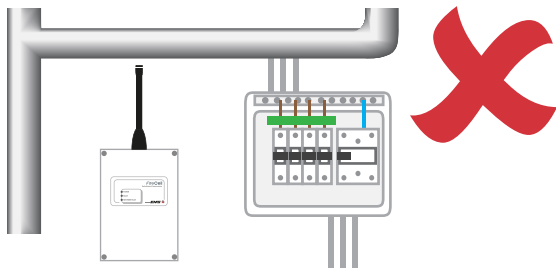


Step 1 - Identify RNC locations

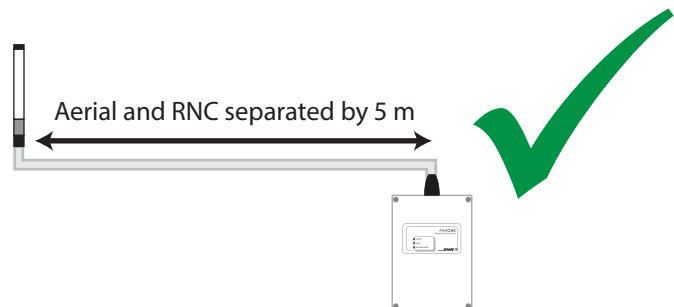
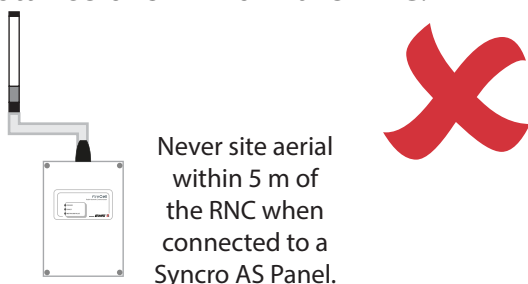
If a radio survey has already been carried out, the survey will detail the recommended location of the Radio Network Communicators (RNCs) and also any aerial positions if required.



When connecting an RNC to a Syncro 2 or 4 loop panel, the recommended distance between metal objects from the aerial is 600 mm. The recommended distance to any other electrical equipment is 2 m.

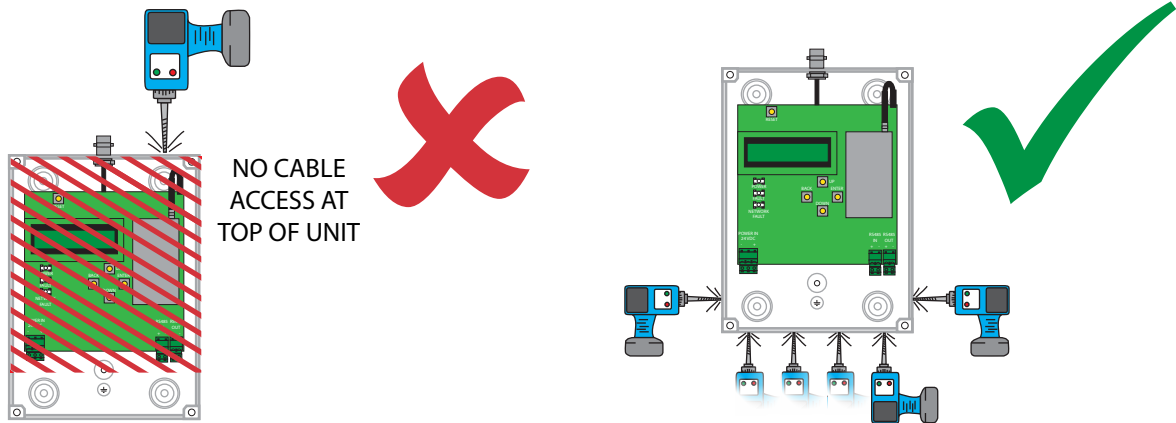


When connecting an RNC to a Syncro AS 1 or 2 loop panel, the same rules apply as set out above. In addition, a high gain aerial must also be fitted and sited a minimum distance of 5 m from the RNC.



Step 2 - Identify cable entry location

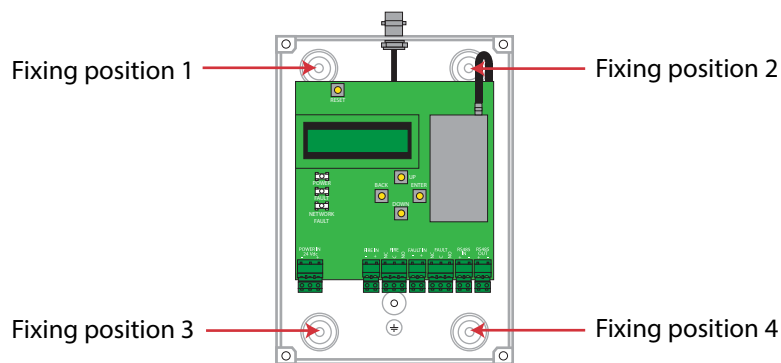
Open the unit to show the inner PCB. The cable entries can now be made. See entry points below:



ALL CABLES TO BE ROUTED NEATLY AT THE BOTTOM OF THE BOX, AND NOT OVER THE PCB BOARD

Step 3 - Fix the RNC to the wall

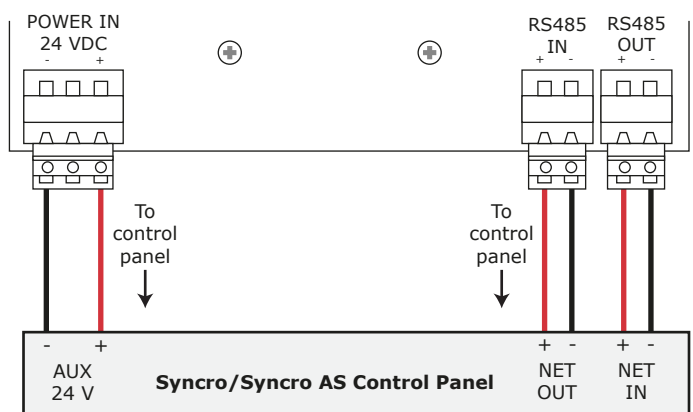
The unit can now be fixed to the wall. The RNC's fixing positions are as below:



Step 4 - RNC to panel wiring

The cable must be passed through the entry points provided. Connections are detailed below:

| RS485 BUS & POWER CONNECTIONS | | | |
|-------------------------------|---|-----------------------------|---|
| CONTROL PANEL | | REMOTE NETWORK COMMUNICATOR | |
| NET IN | + | RS485 OUT | + |
| NET IN | - | RS485 OUT | - |
| NET OUT | + | RS485 IN | + |
| NET OUT | - | RS485 IN | - |
| AUX 24V | + | POWER IN | + |
| AUX 24V | - | POWER IN | - |



Please note: Care must be taken to ensure that the all connections are made correctly before applying power to the unit. Damage may occur if cables are incorrectly connected.

Step 5 - RNC configuration

Setting up of the RNC is carried out by completing the following:

| MASTER PANEL'S RNC | SLAVE PANEL'S RNC |
|---|---|
| <p>STEP A: At the control panel, set network card address to 1. See 'Network Card Setup'.</p> | <p>STEP A: At the control panel, set network card address between 2 & 16. See 'Network Card Setup'.</p> |
| <p>STEP B: At the RNC, 'Set Node Number' to 1 via menu. From front Screen > Node Setup > Set Node Number NOTE: The network card & the RNC addresses must match.</p> | <p>STEP B: At the RNC, 'Set Node Number' between 2 & 16 via menu. From front Screen > Node Setup > Set Node Number NOTE: The network card & the RNC addresses must match.</p> |
| <p>STEP C: Set site ID via menu. From front Screen > Node Setup > Set Site ID NOTE: Site ID is taken from this RNC's ident label.</p> | <p>STEP C: Set site ID via menu. From front Screen > Node Setup > Set Site ID NOTE: Site ID must match master panel RNC's ident.</p> |

Once steps A to C have been carried out at all RNCs go to step D.

Step D: From the master panel's RNC menu a 'Configure System' action must be performed **From front Screen > Node Setup > Configure System**

NETWORK CARD SETUP



Where the above switch is set to address number 1

| | SWITCH NUMBERS | | | | | | | |
|---------|----------------|-----|-----|-----|-----|-----|-----|-----|
| | 1 | 2 | 3 | 4 | 5 | 6 | 7 | 8 |
| ADDRESS | 1 = ON | OFF | OFF | OFF | OFF | OFF | OFF | OFF |
| 2 = | OFF | ON | OFF | OFF | OFF | OFF | OFF | OFF |
| 3 = | ON | ON | OFF | OFF | OFF | OFF | OFF | OFF |
| 4 = | OFF | OFF | ON | OFF | OFF | OFF | OFF | OFF |
| 5 = | ON | OFF | ON | OFF | OFF | OFF | OFF | OFF |
| 6 = | OFF | ON | ON | OFF | OFF | OFF | OFF | OFF |
| 7 = | ON | ON | ON | OFF | OFF | OFF | OFF | OFF |
| 8 = | OFF | OFF | OFF | ON | OFF | OFF | OFF | OFF |
| 9 = | ON | OFF | OFF | ON | OFF | OFF | OFF | OFF |
| 10 = | OFF | ON | OFF | ON | OFF | OFF | OFF | OFF |
| 11 = | ON | ON | OFF | ON | OFF | OFF | OFF | OFF |
| 12 = | OFF | OFF | ON | ON | OFF | OFF | OFF | OFF |
| 13 = | ON | OFF | ON | ON | OFF | OFF | OFF | OFF |
| 14 = | OFF | ON | ON | ON | OFF | OFF | OFF | OFF |
| 15 = | ON | ON | ON | ON | OFF | OFF | OFF | OFF |
| 16 = | OFF | OFF | OFF | OFF | ON | OFF | OFF | OFF |

Step 6 - Signal checks

Once configured, all RNCs will require a signal level check to ensure they are at an adequate level. The level received must be 30 dB or greater.

From front Screen > Node Status > Signal Level



Technology House
 Sea Street
 Herne Bay, Kent
 CT6 8JZ

emsgroup.co.uk/contact

Contact us

