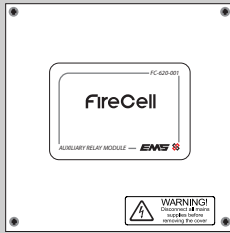


Auxiliary Relay Module Installation Guide



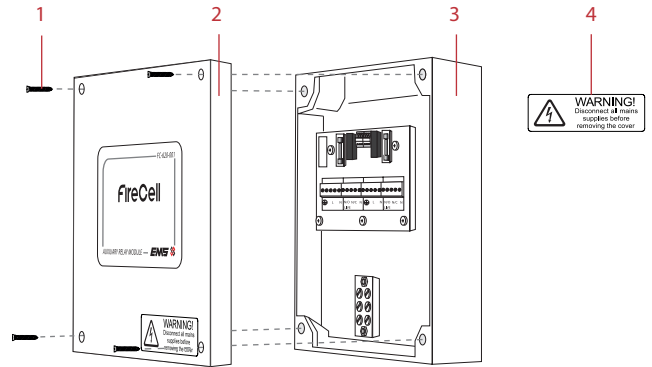
1 Pre installation



Installation must conform to applicable local installation codes and should only be installed by a fully trained competent person.

- Isolate mains supply before starting work.
- Check all connections. Improper wiring can lead to damage to this device and cause injury to the user.
- Ensure the supply circuit provides adequate fuse or circuit breaker protection, in accordance with the circuits current rating.
- This device contains electronics that may be susceptible to damage from Electrostatic Discharge (ESD). Take appropriate precautions when handling electronic boards.
- Ensure any outputs of the associated FC-610-001 Wireless Dual Input/Output Unit are not in use. Any outputs utilised must be permanently disconnected.

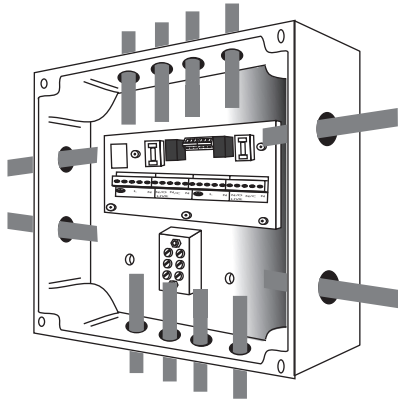
2 Components



1 4x lid screws, 2 Front lid, 3 Back box, 4 Warning label (for connected I/O unit)

3 Remove cable entry points

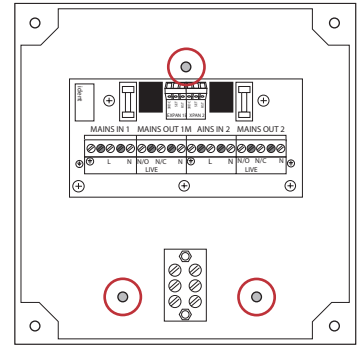
- Drill the cable entry points as necessary.



■ = Available cable entry points

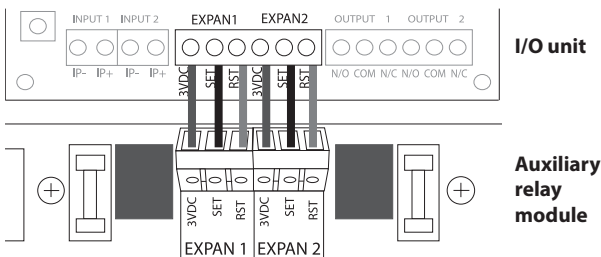
4 Fix back box to wall

- Use all three circled fixing positions to ensure a firm fixing.
- Use suitable fasteners and fixings.

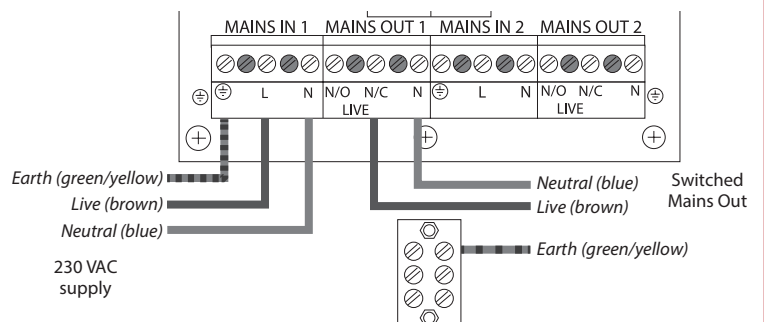


5 Device wiring

- The auxiliary relay module requires connection to a FireCell input/output unit.
- Two relay outputs are available.
- The relay outputs are each capable of switching voltages as specified in the technical specification section of this document.

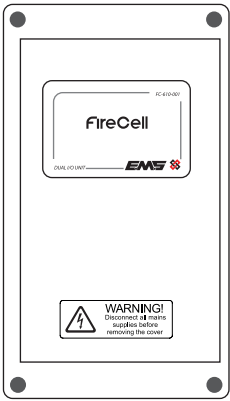


- Use suitable mains rated cable for EXPAN1 and EXPAN2 connections.
- Ensure all outputs of the associated FC-610-001 Wireless Dual Input/Output Unit are not used.



7 Additional label

- Fit supplied Warning Label externally to the lid of the connected FC-610-001 Wireless Dual Input/Output Unit, ensuring full visibility.



8 Output operation

- The auxiliary relay modules relays operate in conjunction with the connected i/o units relay operation.
- MAINS OUT 1 follows the operation of the I/O Unit's OUTPUT 1.
- MAINS OUT 2 follows the operation of the I/O unit's OUTPUT 2.

FireCell I/O	FireCell auxiliary relay module
Output not activated	N/O output on MAINS OUT will have no voltage present.
	N/C output on MAINS OUT will have 230 VAC present.
Output activated	N/O output on MAINS OUT will have 230 VAC present.
	N/C output on MAINS OUT will have no voltage present.

Specification

Operating temperature	-10 to +55 °C
Storage temperature	5 to 30 °C
Humidity	0 to 95% noncondensing
Power requirements	230 VAC supply
Trigger voltage	2.8 to 5 VDC
Output rating	5 A at 250 VAC Resistive load, 3.5A at 250VAC Inductive load
Output fuse rating	5 A (ceramic 5 x 20 mm sand filled type)
Dimensions (W x H x D)	160 x 160 x 53 mm
Application	Type A: Indoor use only
IP rating	IP30
Installation environment	Pollution degree 2 (EN 62368-1)
Overvoltage category	II (EN 62368-1)
Mains screw terminal torque	0.29Nm

Regulatory information

Manufacturer	KGS Manufacturing Poland Sp. z o.o. Ul. Kolejowa 24. 39-100 Ropczyce, Poland
Year of manufacture	See devices serial number label
Certification	 
Approved to	EN62368-1:2014+A11:2017 - Incorporating corrigenda February 2015, May 2015 and June 2015. Audio/video, information and communication technology equipment. Part 1: Safety requirements
	2012/19/EU (WEEE directive): Products marked with this symbol cannot be disposed of as unsorted municipal waste in the European Union. For proper recycling, return this product to your local supplier upon purchase of equivalent new equipment, or dispose of it at designated collection points. For more information see www.recyclethis.info
	Dispose of your batteries in an environmentally friendly manner according to your local regulations.