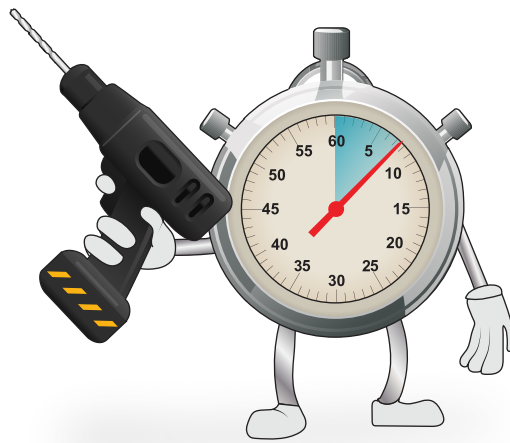


EMS FireCell



RADIO NETWORK COMMUNICATOR (RNC) *For Taktis®*

QUICK START GUIDE



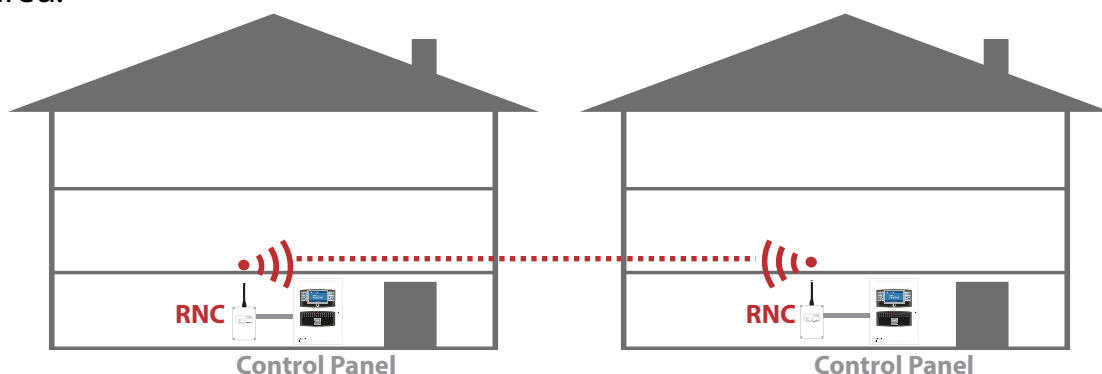
FireCell Guide

FREE mobile phone app

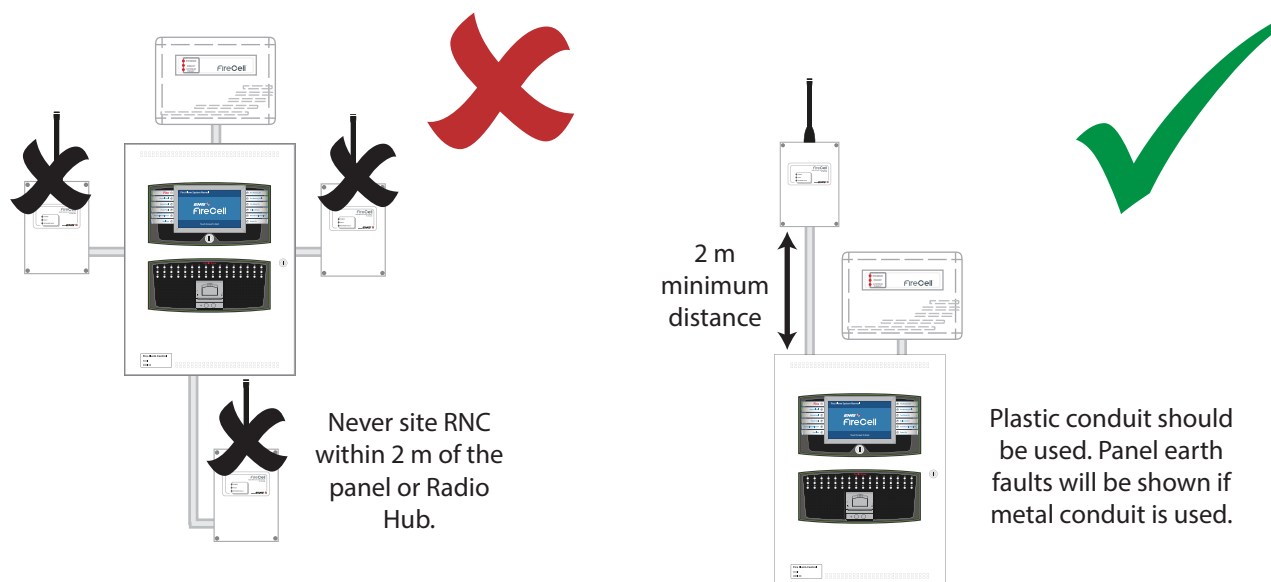
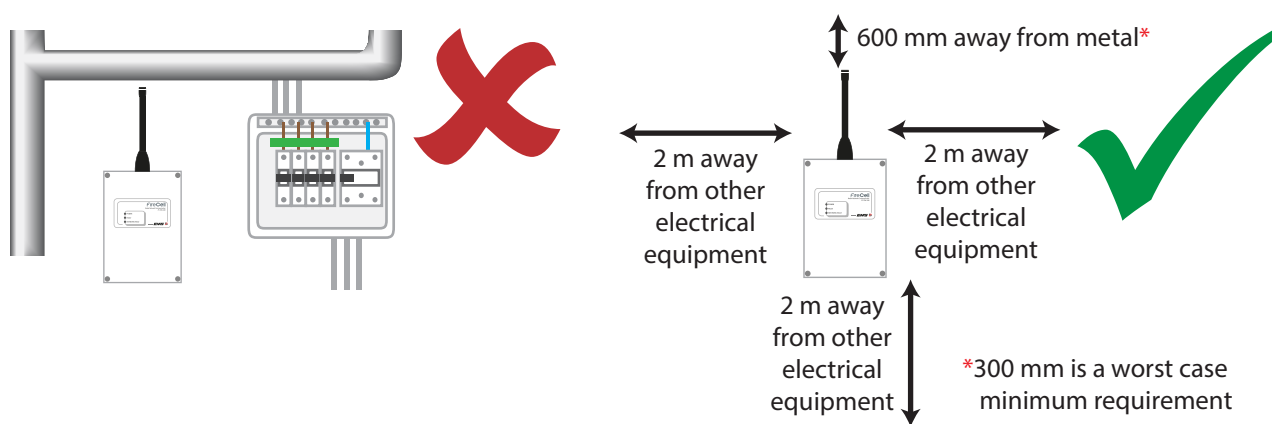


Step 1 - Identify RNC locations

If a radio survey has already been carried out, the survey will detail the recommended location of the Radio Network Communicators (RNCs) and also any aerial positions if required.

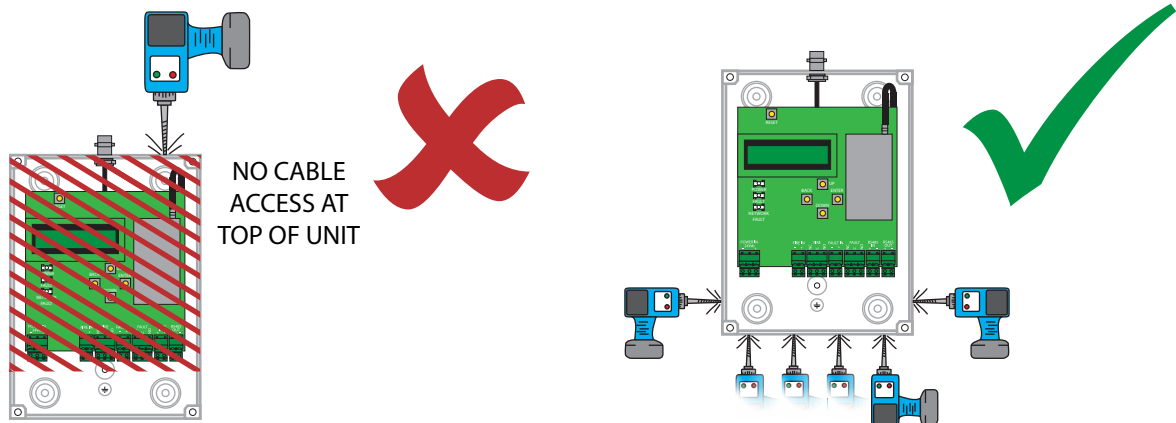


The recommended distance between metal objects from the aerial is 600 mm. The recommended distance to any other electrical equipment is 2 m.



Step 2 - Identify cable entry location

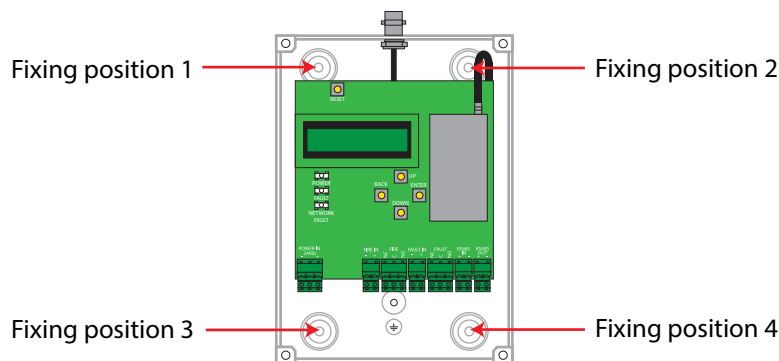
Open the unit to show the inner PCB. The cable entries can now be made. See entry points below:



ALL CABLES TO BE ROUTED NEATLY AT THE BOTTOM OF THE BOX, AND NOT OVER THE PCB BOARD

Step 3 - Fix the RNC to the wall

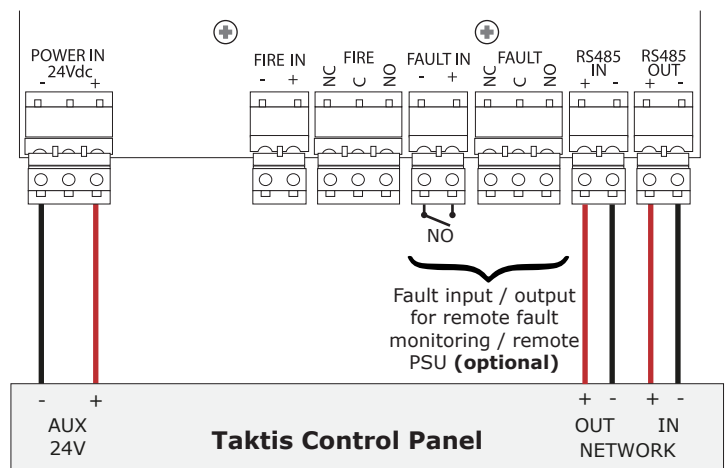
The unit can now be fixed to the wall. The RNC's fixing positions are as below:



Step 4 - RNC to panel wiring

The cable must be passed through the entry points provided. Connections are detailed below:

RS485 BUS & POWER CONNECTIONS					
TAKTIS CONTROL PANEL			REMOTE NETWORK COMMUNICATOR		
NETWORK IN	+	—	RS485 OUT	+	
NETWORK IN	-	—	RS485 OUT	-	
NETWORK OUT	+	—	RS485 IN	+	
NETWORK OUT	-	—	RS485 IN	-	
AUX 24V	+	—	POWER IN	+	
AUX 24V	-	—	POWER IN	-	



Please note: Care must be taken to ensure that connections are made correctly before applying power to the unit. Damage may occur if cables are incorrectly connected.

Step 5 - RNC configuration

Setting up of the RNC is carried out by completing the following:

MASTER CONTROL PANEL'S RNC	SLAVE CONTROL PANEL'S RNC
STEP A: At the master control panel, set the network address to 1. <i>From Taktis panel front Screen> Activate Controls> Enter PIN> Engineer Options> Configuration> Edit Configuration> Panel Settings></i>	STEP A: At the slave control panel, set the network address between 2 & 16. <i>From Taktis panel front Screen> Activate Controls> Enter PIN> Engineer Options> Configuration> Edit Configuration> Panel Settings></i>
STEP B: At the RNC, 'Set Node Number' to 1 via menu. <i>From front Screen> Node Setup> Set Node Number</i> NOTE: The Taktis network address & the RNC address (node number) must match.	STEP B: At the RNC, 'Set Node Number' between 2 & 16 via menu. <i>From front Screen> Node Setup> Set Node Number</i> NOTE: The Taktis network address & the RNC address (node number) must match.
STEP C: Set Site ID via menu. <i>From front Screen> Node Setup> Set Site ID</i> NOTE: Site id is taken from this RNC's ident label.	STEP C: Set Site ID via menu. <i>From front Screen> Node Setup> Set Site ID</i> NOTE: Site id must match master control panel RNC's ident.

Once steps A to C have been carried out at all RNCs, go to step D.

Step D: From the master control panel's RNC menu, a 'Configure System' action must be performed to finalise configuration:

From front Screen> Node Setup> Configure System

Step 6 - Signal checks

Once configured, all RNCs will require a signal level check to ensure they are at an adequate level. The level received must be 30 dB or greater.

From front Screen> Node Status> Signal Level



Technology House
Sea Street
Herne Bay, Kent
CT6 8JZ
emsgroup.co.uk/contact

Contact us

