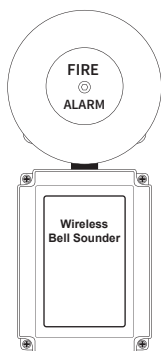


Wireless Bell Sounder

Installation Guide



Part no

FC-171-003
FC-174-002

Description

Wireless Bell Sounder Base Only*
Wireless Bell Sounder

* Parts 8 and 9 from Components section. See below.

1 Pre installation

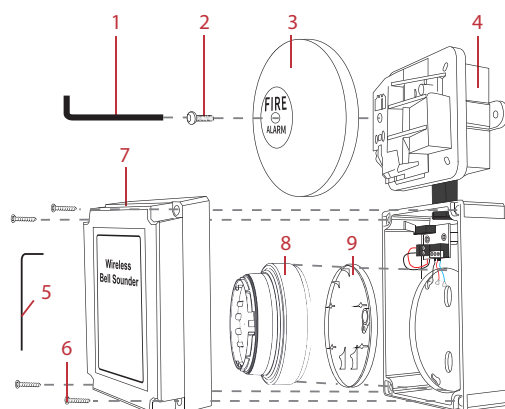


Installation must conform to applicable local installation codes and should only be installed by a fully trained competent person.

- Ensure that the device is installed as per the site survey.
- The use of a non-metallic spacer should be considered if mounting the device on to a metal surface.
- Do NOT Press the Log On button on a pre-programmed device, as this will cause communication with the Control Panel to be lost. Should this happen, delete the device from the system and add it back on.
- This device contains electronics that may be susceptible to damage from Electrostatic Discharge (ESD). Take appropriate precautions when handling electronic boards.

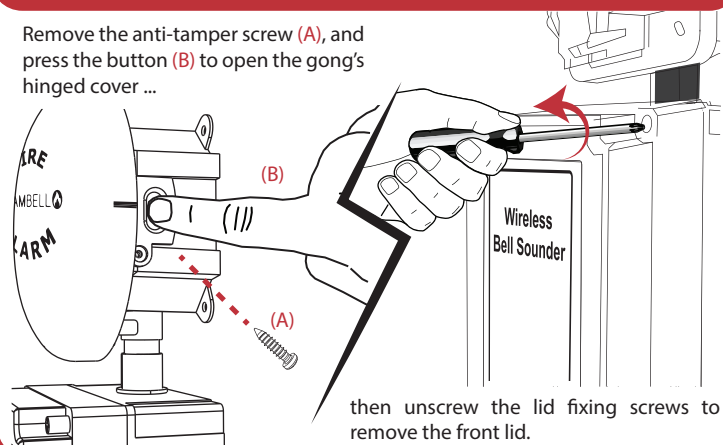
2 Components

- 1 4 mm allen key,
- 2 Hex bolt,
- 3 Gong,
- 4 Base,
- 5 1.5 mm allen key,
- 6 4x lid fixing screws,
- 7 Front lid,
- 8 Wireless module,
- 9 Battery retaining plate



3 Disassemble device

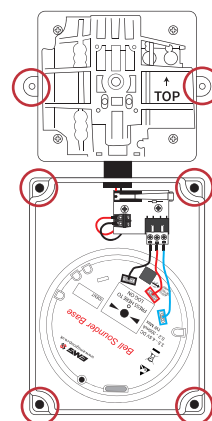
Remove the anti-tamper screw (A), and press the button (B) to open the gong's hinged cover ...



4 Fix device to wall

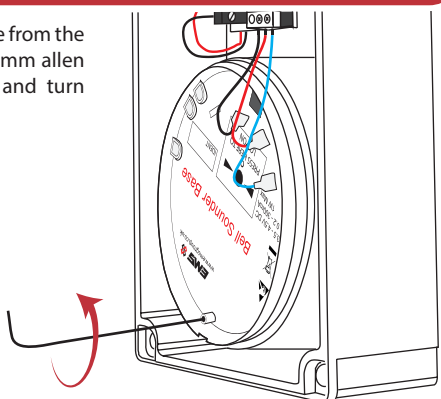
Whilst using the supplied base mounting template (MK277):

- Ensure the device is fitted in the orientation shown.
- DO NOT fit the device on an uneven surface.
- Use all six circled mounting positions.
- Use suitable fasteners and fixings.



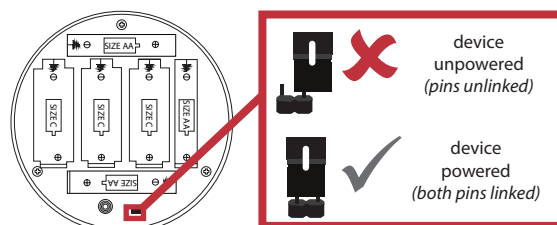
5 Unlock wireless module

To unlock the wireless module from the mounting plate, insert a 1.5 mm allen key into the allen key slot and turn anticlockwise as shown.



6 Power device

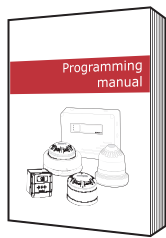
- Remove the wireless module and battery retaining plate.
Note: when removing cables, DO NOT use excessive force.
- When fitting / replacing batteries; observe correct polarity, using only specified batteries.
- Connect the power jumper across the PIN header.



7 Configuration

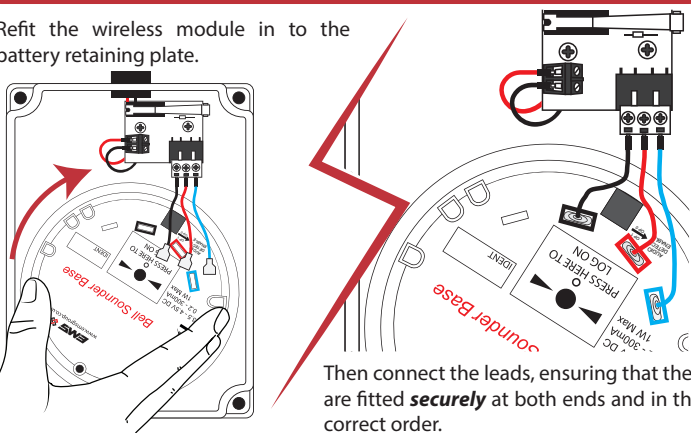
The device's loop address is configured within the user interface's menu structure.

- Refer to the programming manual for full programming details.



8 Refit wireless module and leads

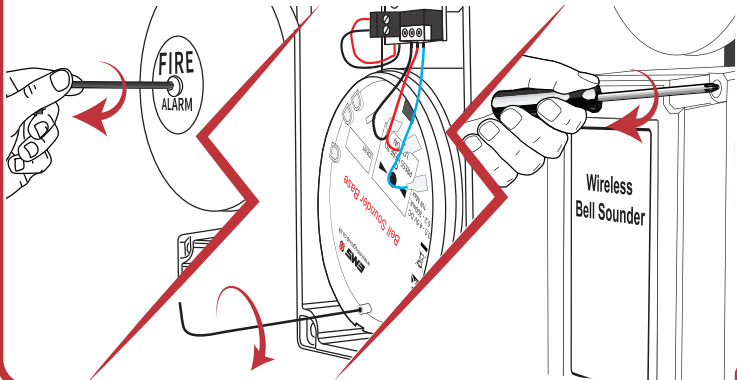
Refit the wireless module in to the battery retaining plate.



Then connect the leads, ensuring that they are fitted **securely** at both ends and in the correct order.

9 Re-assemble device

Refit the Gong... lock the wireless module in to place... and finally, secure the lid.



10 Test device




Test the device to ensure full functionality.



Specification

Operating temperature	-10 to +55 °C
Storage temperature	5 to 30 °C
Humidity	0 to 95% non-condensing
Supply	3x AA alkaline (Panasonic LR6AD Powerline / Varta 4006 Industrial) & 3x C alkaline (Panasonic LR14AD Powerline / Varta 4014 Industrial)
CAUTION! Fitting of an incorrect battery type invalidates the product certification and may result in poor performance.	
Note: when changing batteries, check all connections are re-made correctly and fully test the device to ensure correct operation.	
Operating voltage	3.5 to 4.5 Vdc
Current consumption	0.2 to 300 mA
Max power consumption	1 W
Sounder output	Up to 95 dBA at 1 m For full sounder output information, refer to the Sounder data document (MK309).
IP rating	IP21C
Operating frequency	868 MHz
Output transmitter power	Auto adjusting 0 to 14 dBm (0 to 25 mW)
Signalling protocol	X
Dimensions (W x H x D)	152 x 334 x 101 mm
Location	Type A: For indoor use

Regulatory information

Manufacturer	KGS Manufacturing Poland Sp. z o.o. Ul. Kolejowa 24. 39-100 Ropczyce, Poland
Year of manufacture	See devices serial number label
Certification	 ¹⁹ 0905  ²⁴ 0359
DoP number	0359-CPR-00667
Approved to	See part listing for associated products: EN54-3:2001. Incorporating Amendments Nos. 1 and 2. Fire detection and fire alarm systems. Part 3: Fire alarm devices - Sounders. EN54-25:2008. Incorporating corrigenda September 2010 and March 2012. Fire detection and fire alarm systems. Part 25: Components using radio links.
European Union Directives	EMS declares that this device is in compliance with Directive 2014/53/EU. The full text of the EU declaration of conformity is available at the following internet address: www.emsgroup.co.uk
	2012/19/EU (WEEE directive): Products marked with this symbol cannot be disposed of as unsorted municipal waste in the European Union. For proper recycling, return this product to your local supplier upon purchase of equivalent new equipment, or dispose of it at designated collection points.
	For more information see www.recyclethis.info Dispose of your batteries in an environmentally friendly manner according to your local regulations.