

## WIRELESS REMOTE INDICATOR MODULE (RIM)

### *Product datasheet*

#### Key features

- Dual band 868 MHz operation
- Fire indication LED
- Anti tamper locking mechanism
- Third party EN certified
- Satisfies the requirements of Irish standard IS3218

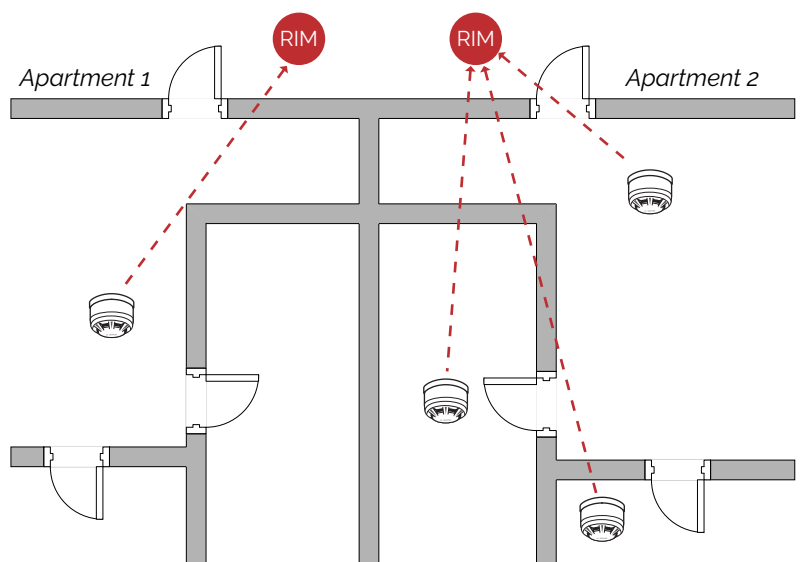


#### Product overview

The FireCell wireless RIM is quick and easy to install and can be used to remotely indicate a fire event at a location where access is not easily available. This RIM can also be associated with a single detector or a number of detectors.

Combined with detailed fire control panel information, the RIM aids swift fire location, saving valuable time in an emergency.

This device has third party EN certification and is compatible with the EMS FireCell system including the Fusion RLM.



## Technical data



-10 to 55 °C



6 x AA Alkaline (*Panasonic LR6AD  
Powerline / Varta 4006 Industrial*)



IP23, indoor use only



868 MHz



Up to 1250 m (*clear line of site*)\*



0 to 14 dBm (*auto adjusting*)



X (*signalling protocol*)



113 x 81 mm (Ø x D)



0.4 kg



CE UK  
CA



0359-CPR-00127



EN54-25



FCX-178-001

***\*Line of sight refers to the maximum distance over which radio frequency signals can travel in a direct, unobstructed path between transmitter and receiver.***