

# FireCell

Scalable wireless  
fire solutions



WIRELESS FIRE SYSTEMS

MK410-99 (Issue 3) October 2024, AJM

# Wireless system benefits

**Wireless systems offer installers the highest flexibility.**

A wireless system offers peace of mind whether in application or budget, with any system guaranteed to meet the exacting specified needs.

**Installation of wireless avoids any business interruption.**

Whilst a fire system is a necessity, and the installation a basic requirement, impacting business operations and stopping it from trading can be a significant and potentially costly headache.

Thanks to their plug-and-play nature, our wireless fire systems avoid this.

**Wireless systems have a key deterministic advantage.**

We use the term deterministic to explain the greatest commercial advantage of modular wireless fire systems: there are no surprises at installation – it works as planned.

◆ Guaranteed application – installers knowing a system is going to work as designed gives all parties confidence and reassurance.

◆ No hidden or additional costs – our pre-installation surveys mean all building challenges have been already addressed and resolved.

◆ No delays – with access challenges avoided projects can be delivered as planned.

# Why Choose FireCell?

It's easy to prove FireCell offers a best ownership solution for fire protection. Beyond the virtue of being an investment in technology, to future-proof a building's protection from fire, our market leading fire system offers low cost ownership, meets all standards and presents no unanticipated costs.

- ◆ 8,064 wireless devices\*
- ◆ Meets, or exceed, all standards - EN54
- ◆ Real-time changes on demand



**Buildings can be designed and planned without limits.**

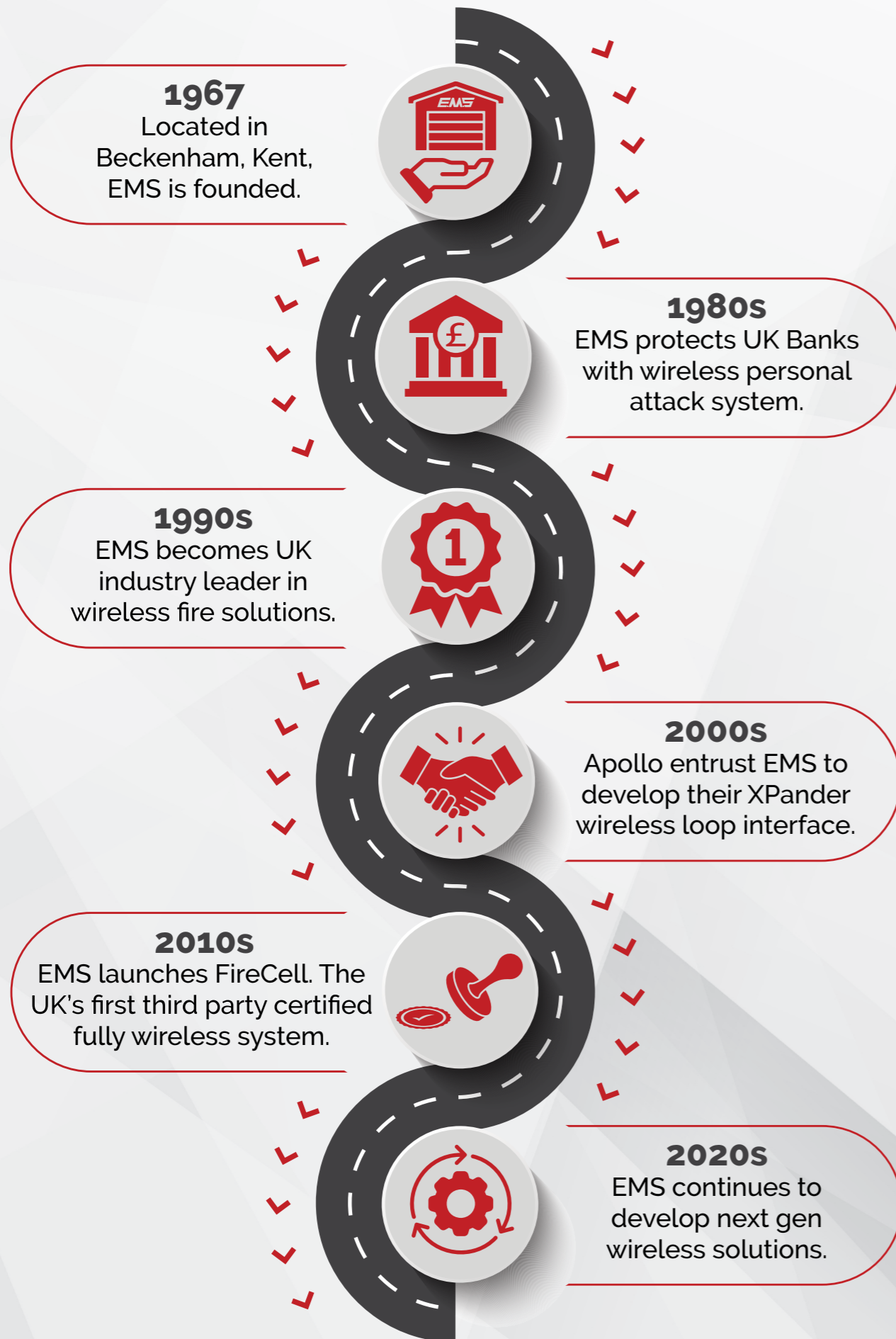
Each building has unique architecture, and fire system cable installations can limit, even compromise, a building's design and aesthetic, often presenting unexpected challenges and costs.

- ◆ Limitless design – designing a building with a wireless fire system removes the need entirely for cabling and ductwork and reduces that budgetary burden.
- ◆ Future-proofed – a wireless fire system means buildings can be designed freely with the knowledge that, as their usage and layout changes, their fire protection is not compromised, nor new complexity added.
- ◆ Your vision uncompromised - A wireless system offers architects the freedom to design and create without compromise.

\* Based on 16 fully populated 4-loop (504 device) networked control panels. Radio networking only available with Kentec (FireCell) control panels. 32,256 wireless devices possible with non-radio networked 64 panel system.



# History Of EMS



# Proven wireless reliability

**32**  
32 channels available

Dual channel operation

RF noise immunity

Diversity antenna technology

EN54-25 third party certified

Fit & forget

# Our guarantee

FREE underwritten wireless survey\*

FAST system installation

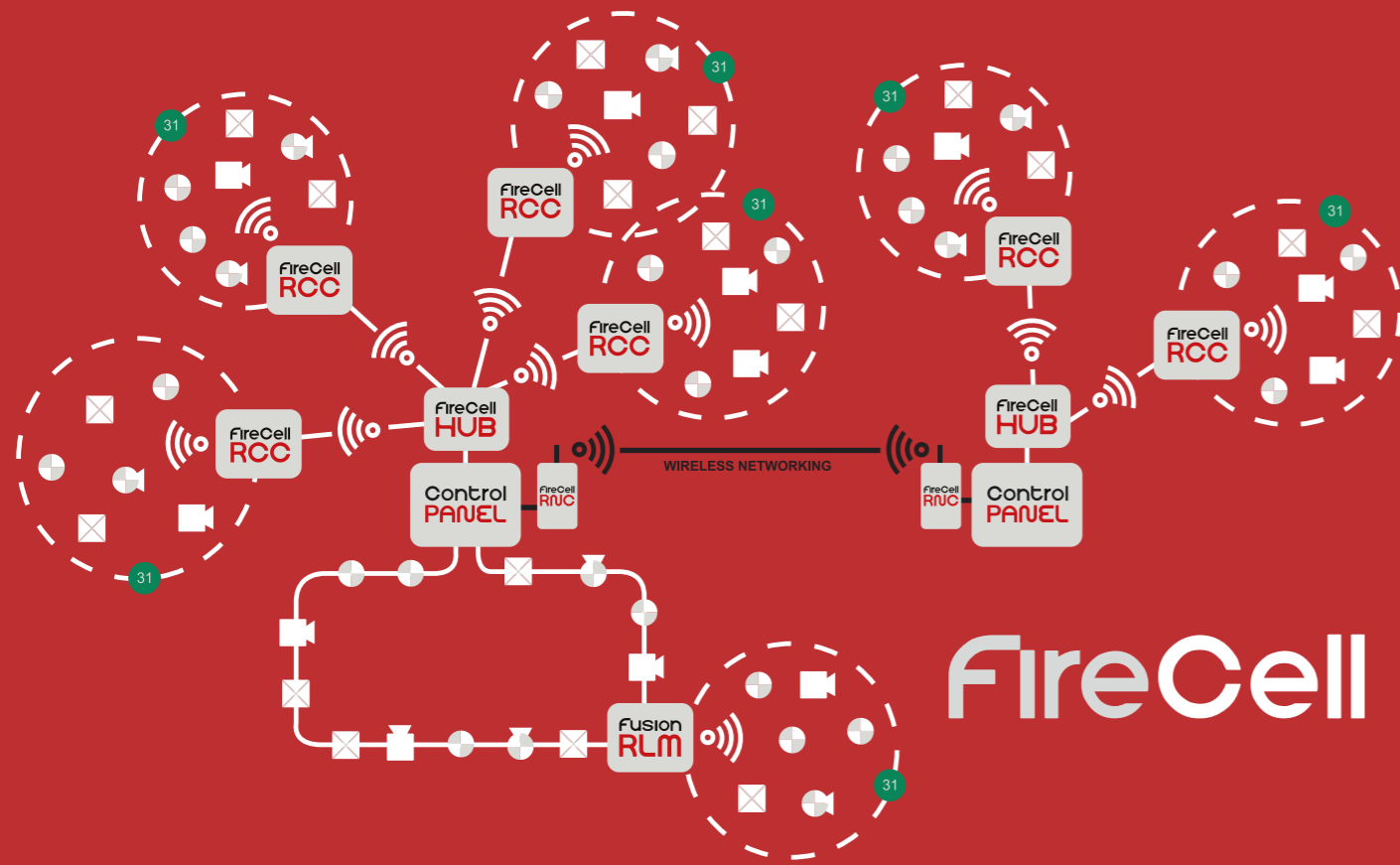
**5 YEAR**  
GUARANTEE

5yr warranty on all EMS wireless components

Fit & forget

\* Free underwritten wireless surveys available in the UK only

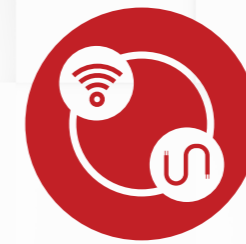
# FireCell infrastructure



# FireCell benefits



Medium - large scale wireless



Hybrid wireless and / or wired



Your XP95 panel\*



8k wireless devices\*\*



Fast installation



EMS reliability



Fit & forget

# Extended panel support



Taktis® series



Syncro AS



2X-A series

Contact us for details on the new 2X-A series range of control panels.

**DID YOU KNOW?**



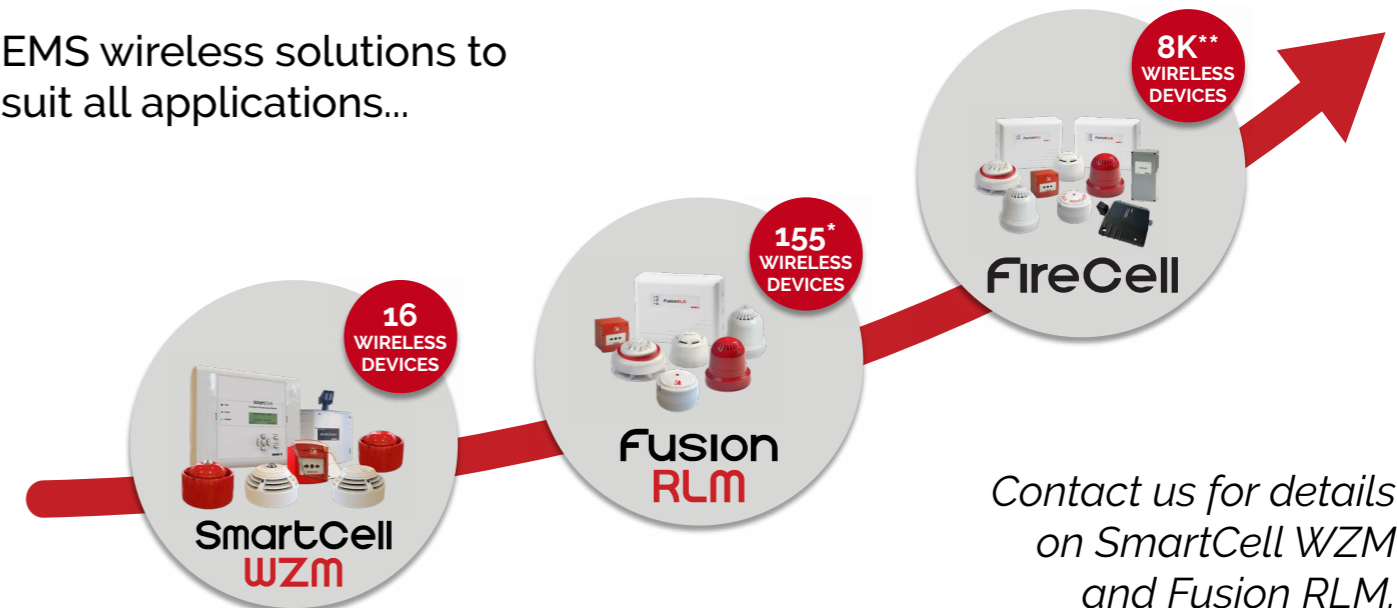
You can use your XP95 control panel with FireCell.

Note: Fault notification detail varies by panel manufacturer.

Contact technical support for details.

# EMS scaleable solutions

EMS wireless solutions to suit all applications...



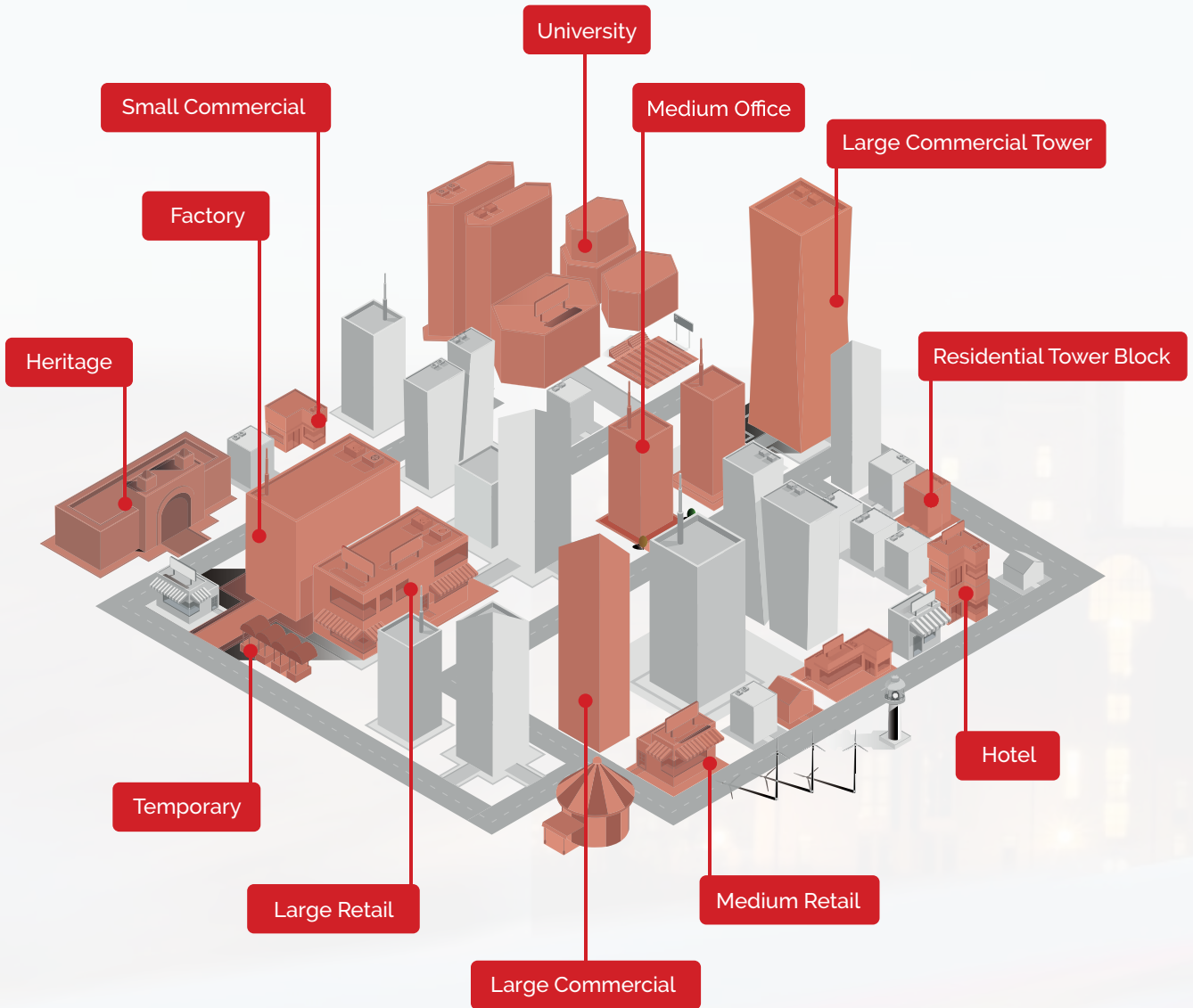
Contact us for details on SmartCell WZM and Fusion RLM.

\*XP95 control panel required. Fault notification detail varies by panel manufacturer. Full system integration is achieved with Kentec (FireCell) or 2x-A series (FireCell) control panels.

\*\* Based on 16 fully populated 4-loop (504 device) networked control panels. Radio networking only available with Kentec (FireCell) control panels. 32,256 wireless devices possible with non-radio networked 64 panel system.

# FireCell

maximum flexibility for  
limitless applications



Technology House  
Sea Street  
Herne Bay  
Kent  
CT6 8JZ

[emsgroup.co.uk/contact](http://emsgroup.co.uk/contact)



SCAN  
ME