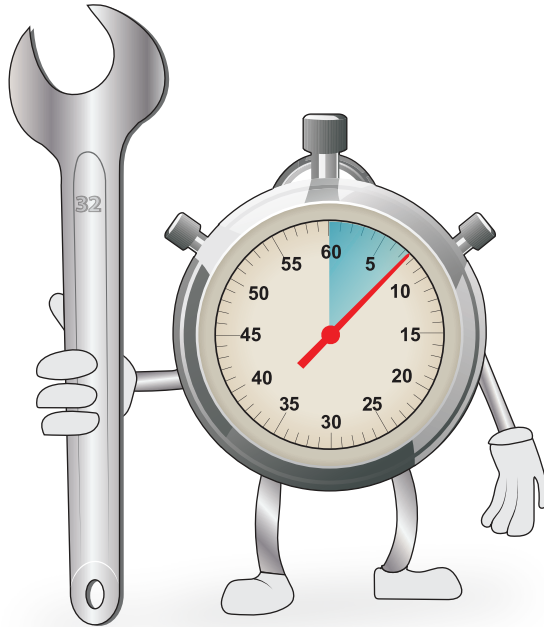


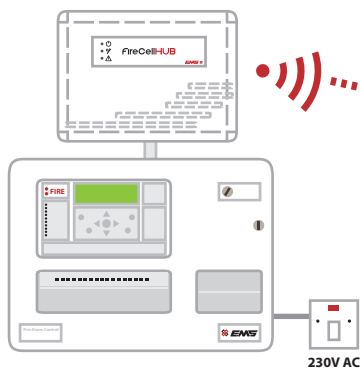


FireCellHUB



QUICK START GUIDE

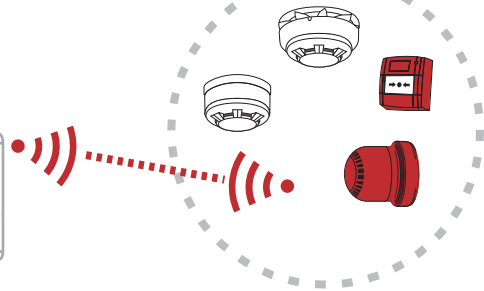
FireCell HUB



Panel



FireCell RCC



FireCell Guide

FREE mobile phone app



Android



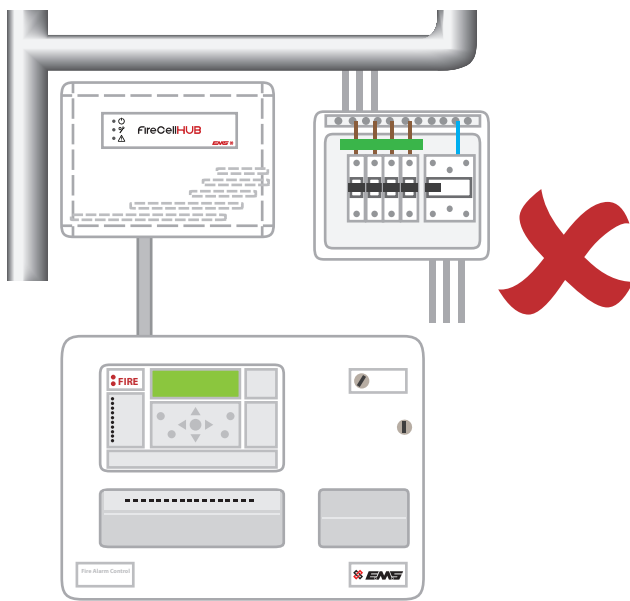
iPhone

Step 1 - Identify the Hub location

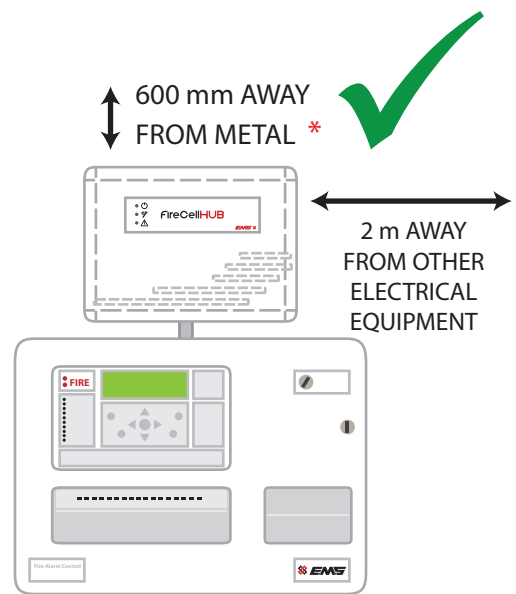
The FireCell Hub is powered from the control panel's loop connection. If a radio survey has been carried out the survey will detail the recommended location of the Hub along with the control panel that it will be connected nearby.

The Hub is required to be connected via glands, close coupled above the control panel.

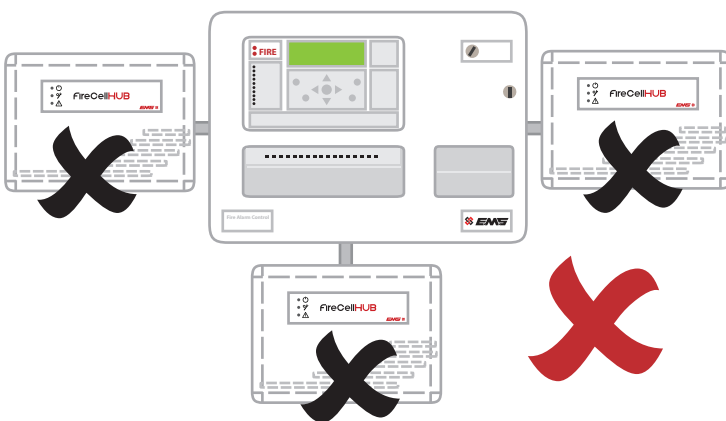
The recommended minimum distance between metal objects from the aerial is 600 mm. The recommended minimum distance to any other electrical equipment is 2 metres.



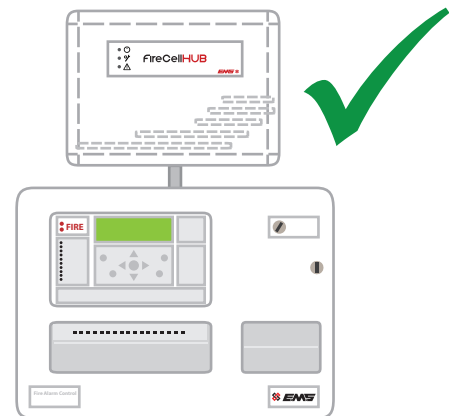
NEVER SITE HUB NEAR METAL WORK OR ELECTRICAL EQUIPMENT



* 300 mm is an acceptable distance where 600mm is not achievable



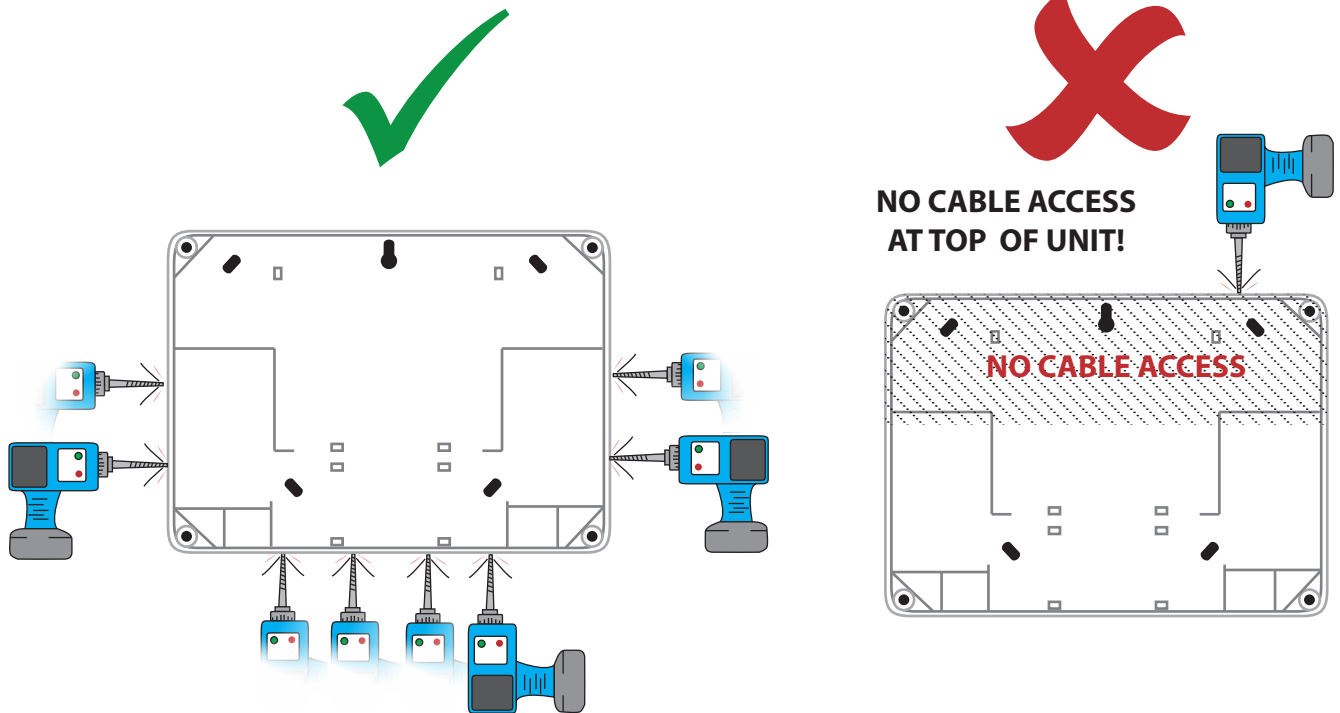
NEVER SITE HUB BELOW OR TO THE SIDE OF THE PANEL



HUB CORRECTLY SITED ABOVE THE PANEL

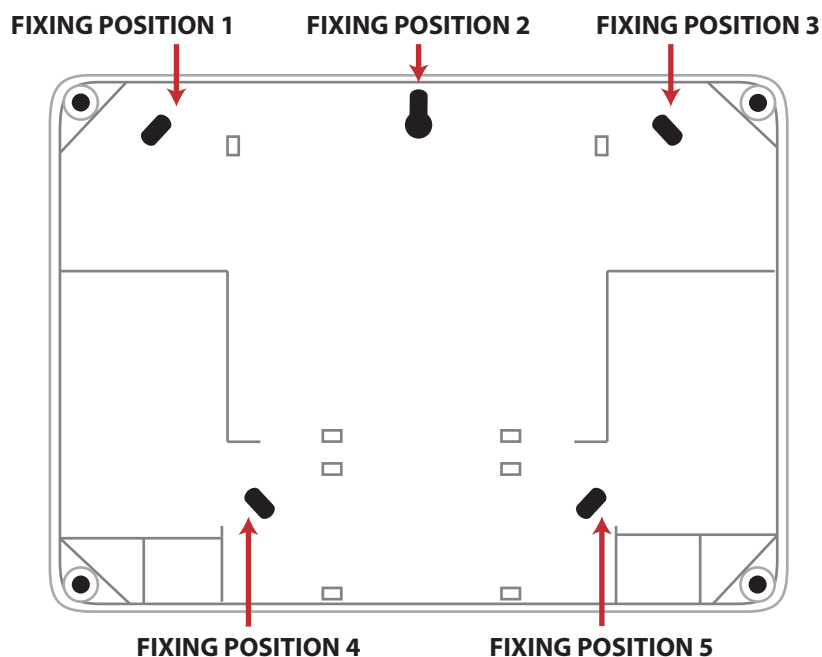
Step 2 - Prepare the Hub box

Open the unit and carefully remove the inner PCB. The loop cable entries can now be made. See entry points below:



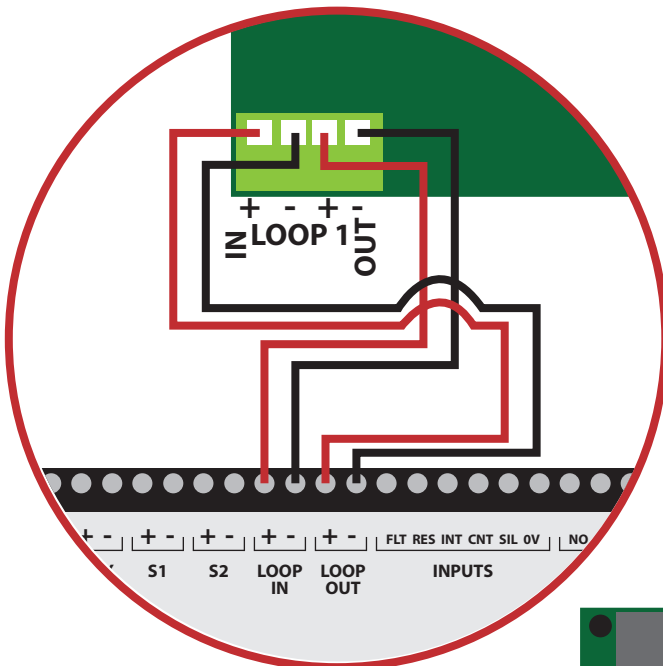
Step 3 - Fix the Hub to the wall

The unit can now be fixed to the wall. The PCB and connecting lead can now be carefully re-inserted. The Hub's fixing positions are as below:



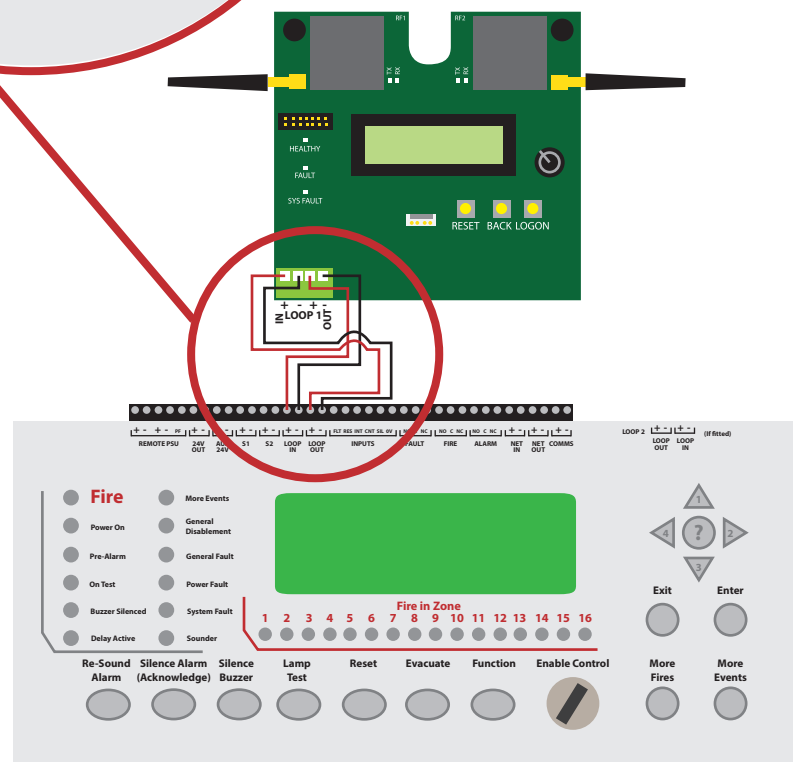
Step 4 - Hub wiring

The Hub has up to four separate sets of loop connections: LOOP IN -, LOOP IN +, LOOP OUT - and LOOP OUT + for each available loop. The cable must be passed through the entry points provided. Connections are detailed below:



LOOP 1	
PANEL	HUB
OUT +	→ IN +
OUT -	→ IN -
IN +	→ OUT +
IN -	→ OUT -

NOTE: Repeat for loops 2-4 if used



Contact us



Fire Industry Association



Intertek



014