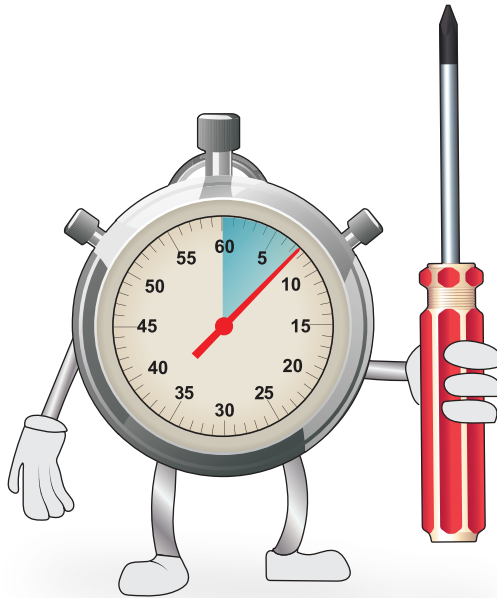


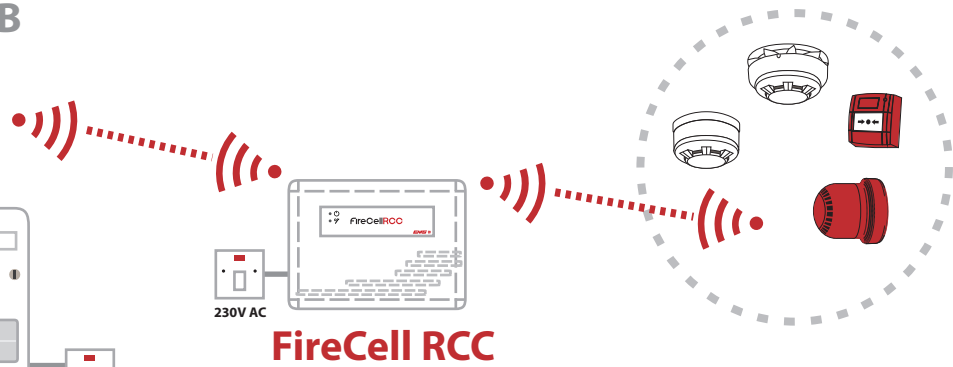
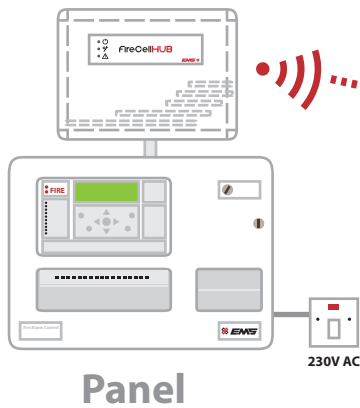


FireCellRCC



QUICK START GUIDE

FireCell HUB

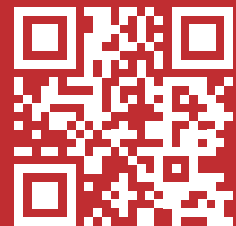


FireCell Guide

FREE mobile phone app



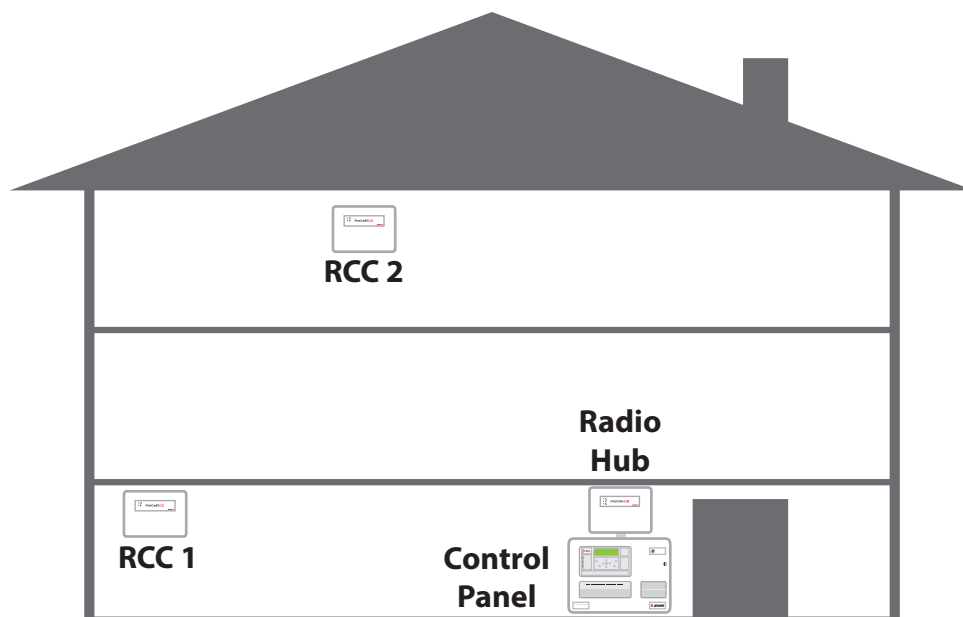
Android



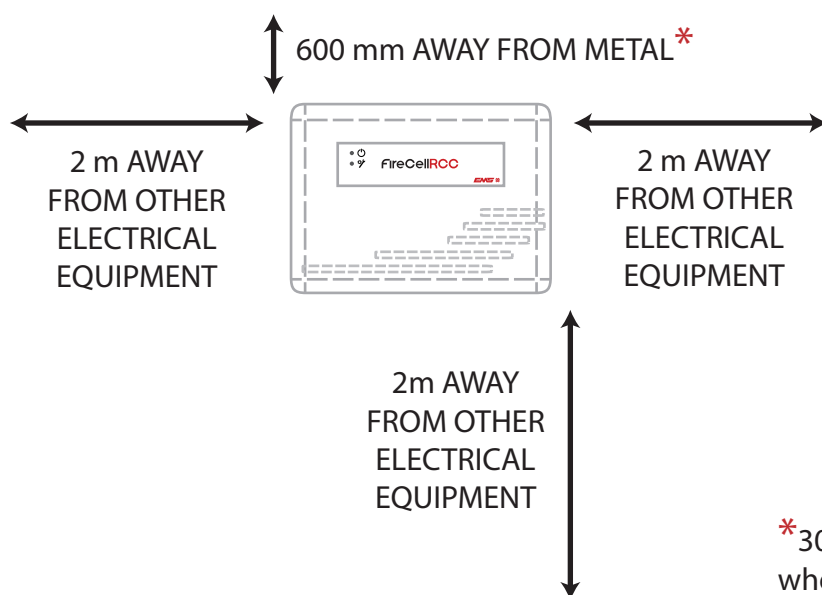
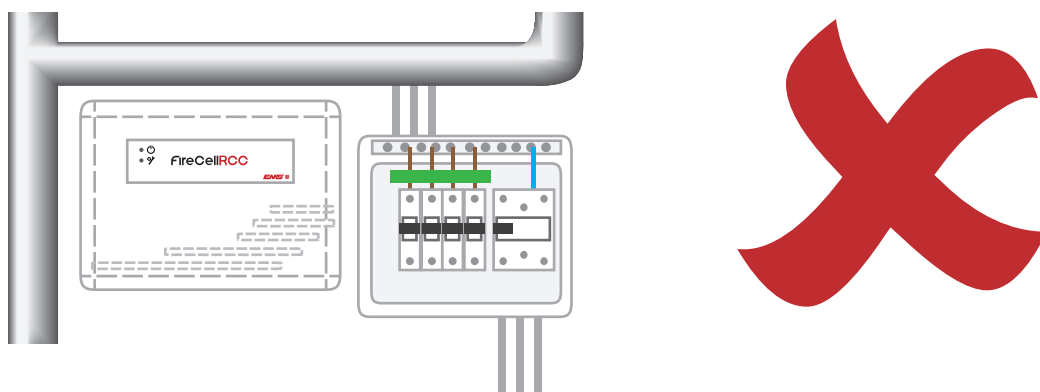
iPhone

Step 1 - Identify RCC locations

If a radio survey has already been carried out, the survey will detail the recommended location of the RCCs and also their communication path back to the Hub.



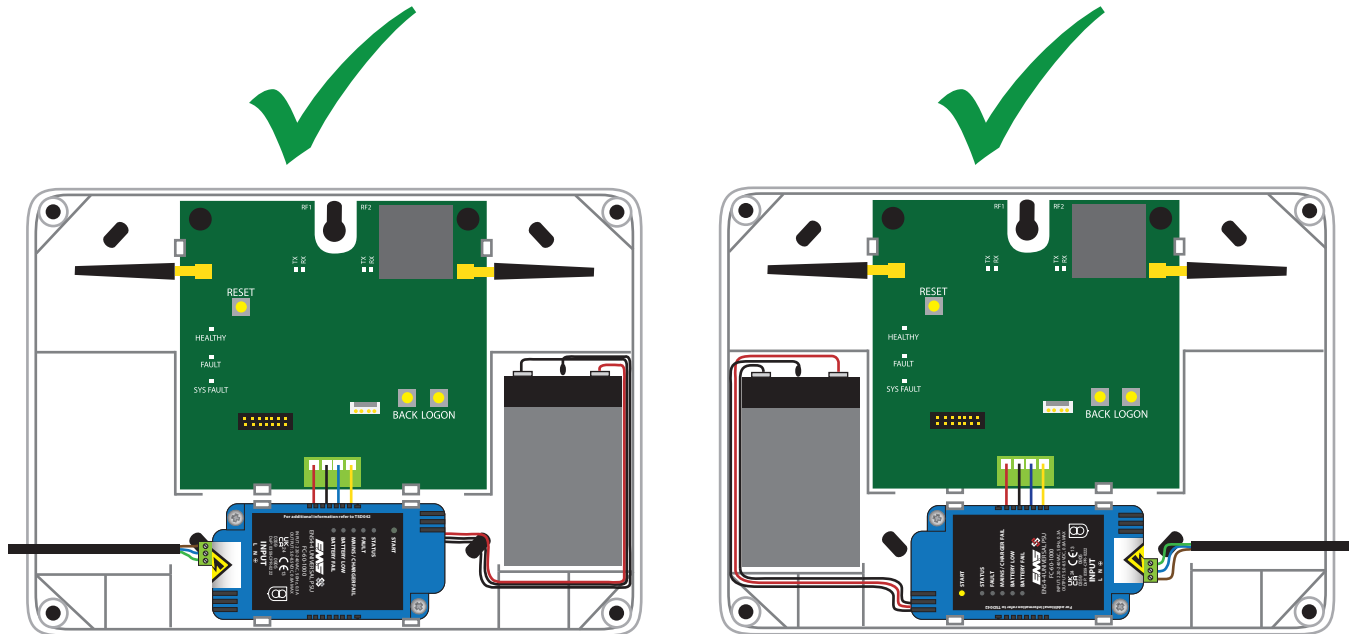
The recommended distance between metal objects from the aerial is 600 mm. The recommended distance to any other electrical equipment is 2 metres.



*300 mm is an acceptable distance where 600 mm is not achievable

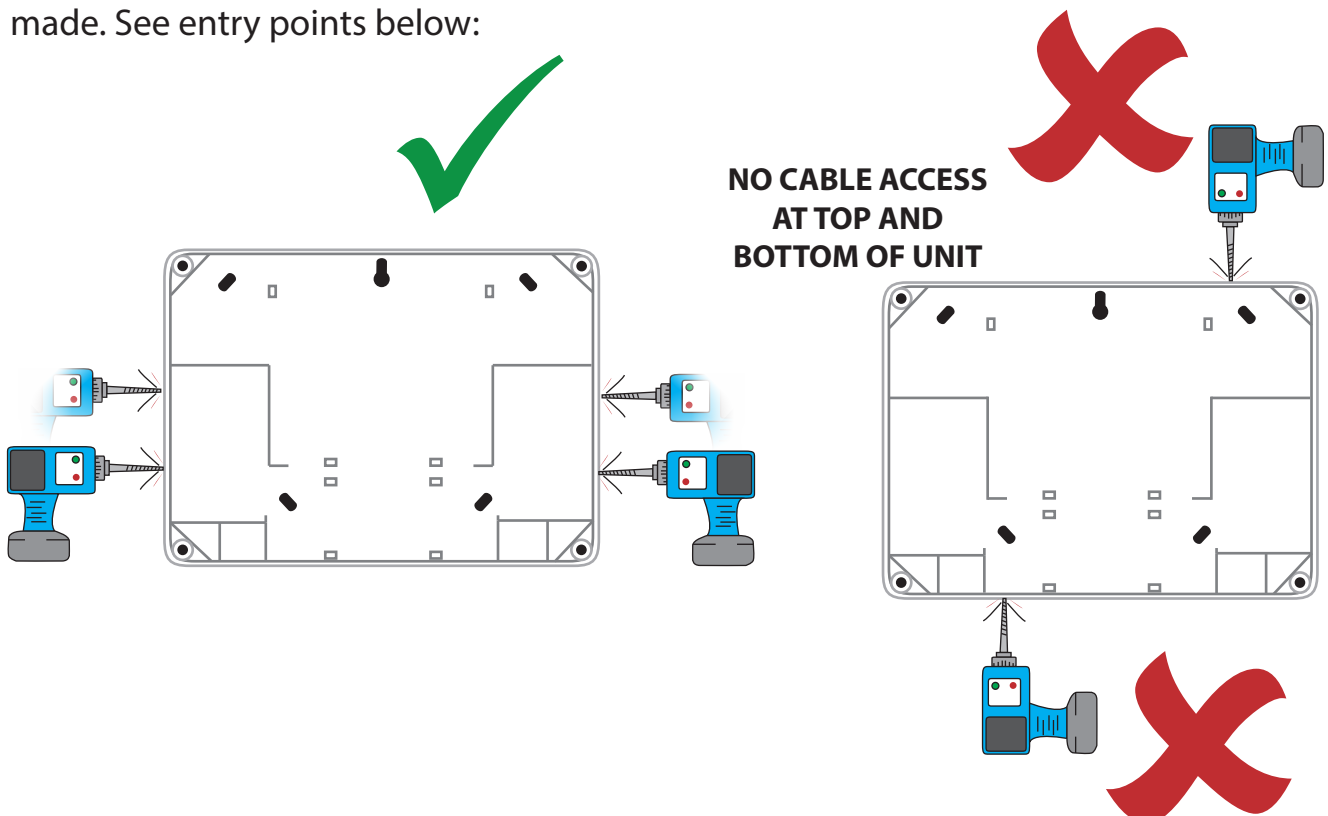
Step 2 - Identify mains entry location

Mains cable entry can be made on either side of the unit. This is made possible with rotation of the power supply allowing maximum installation flexibility. The RCC's backup battery can also be relocated to the other side of the unit. See the FireCell instruction pack for more information.



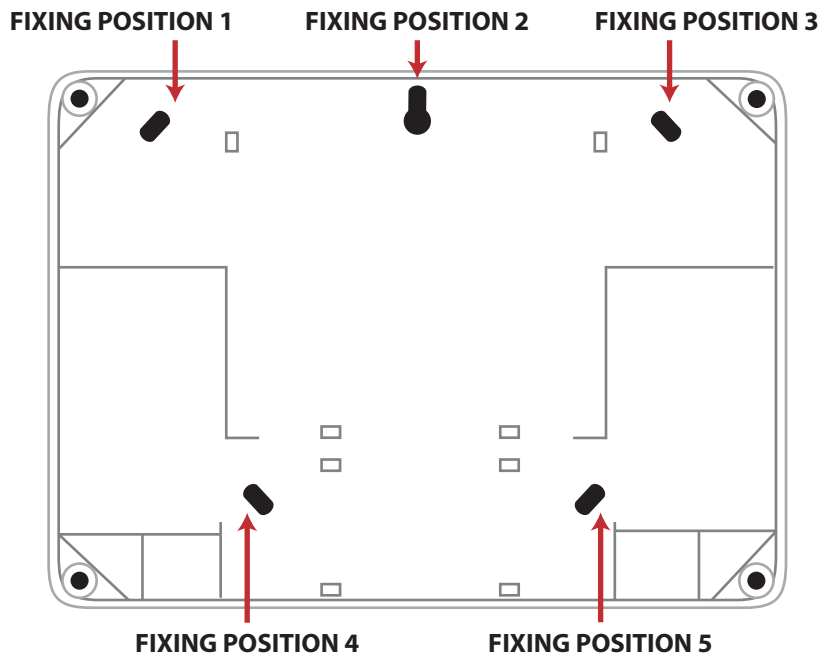
Step 3 - Prepare RCC box

Open the unit and carefully remove the inner PCB. The mains cable entry can now be made. See entry points below:



Step 4 - Fix the RCC to the wall

The unit can now be fixed to the wall. The PCB and connecting lead can now be carefully re-inserted. See the RCC's fixing positions below:



Step 5 - Apply power to RCC

Connect the mains supply and power the unit. The battery should also now be connected.

Step 6 - Log on RCC to the Hub

If the system has been supplied fully programmed, the installation of the RCC is now complete.

If the system has been supplied unprogrammed, the RCC will now require programming to the Hub. It is recommended that the RCC's ident number is recorded along with the RCC's radio communication path back to the Hub.

See the FireCell instruction pack for more information.

EMS



Contact us



Fire Industry Association

