

Wireless Remote Indicator Module (RIM) Product Datasheet

Key features

- Dual band 868 MHz operation
- Fire indication LED
- Anti tamper locking mechanism
- Third party EN certified
- Satisfies the requirements of Irish standard IS3218

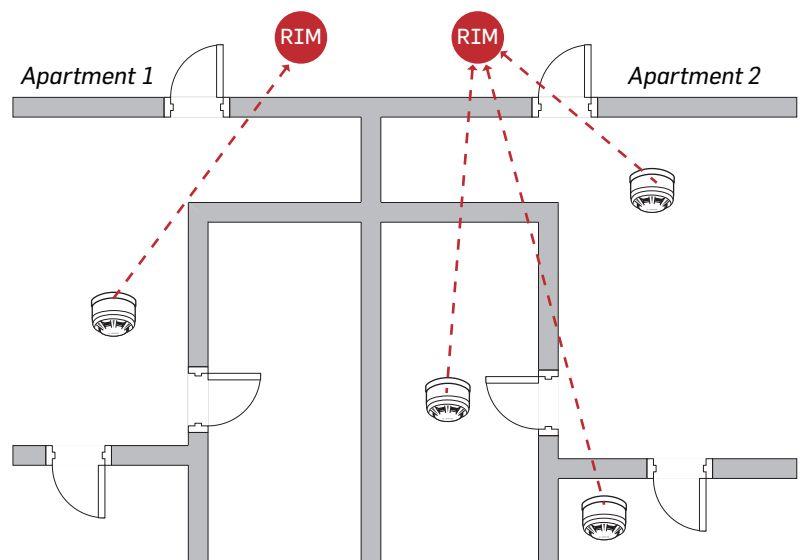


Product overview


The FireCell Wireless Remote Indicator Module (RIM) is quick and easy to install and can be used to remotely indicate a fire event at a location where access is not easily available. This RIM can also be associated with a single detector or a number of detectors.


Combined with detailed Fire Control Panel information, the RIM aids swift fire location, saving valuable time in an emergency.

This device is third party EN certified and is compatible with the EMS FireCell system and EMS Fusion Radio Loop Module (RLM).




Technical data

 -10 to 55 °C


 6 x AA Alkaline (*Panasonic LR6AD Powerline / Varta 4006 Industrial*)

 IP23, indoor use only

 868 MHz

 0 to 14 dBm (*auto adjusting*)

 X (*signalling protocol*)

 113 x 81 mm (\emptyset x D)

 0.4 kg

 **CE10**
0359-CPR-00127

 EN54-25

 FCX-178-001