

Wireless Bell Sounder Installation Guide

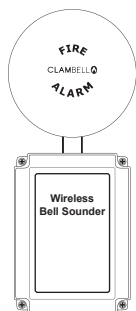
Part No

FC-171-003
FC-174-002

Product Description

Wireless Bell Sounder Base Only*
Wireless Bell Sounder

* Parts ⑦ and ⑧ from Components section. See below.

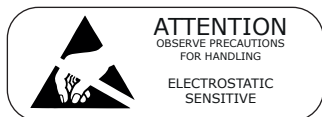


1 Pre Installation



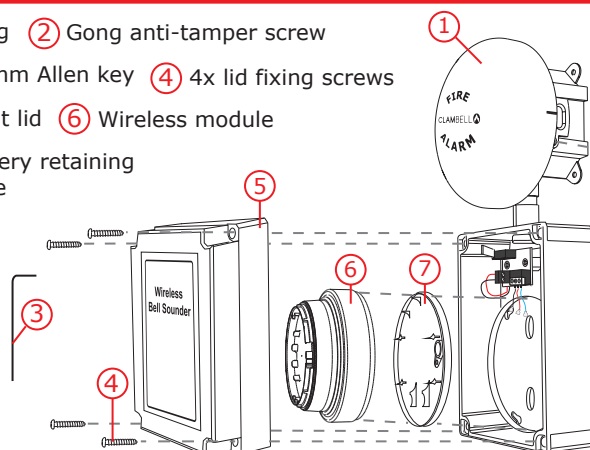
Installation must conform to applicable local installation codes and should only be installed by a fully trained competent person.

- Ensure that the device is installed as per the site survey.
- The use of a non-metallic spacer should be considered if mounting the device on to a metal surface.
- Do NOT Press the Log On button on a pre-programmed device, as this will cause communication with the Control Panel to be lost. Should this happen, delete the device from the system and add it back on.



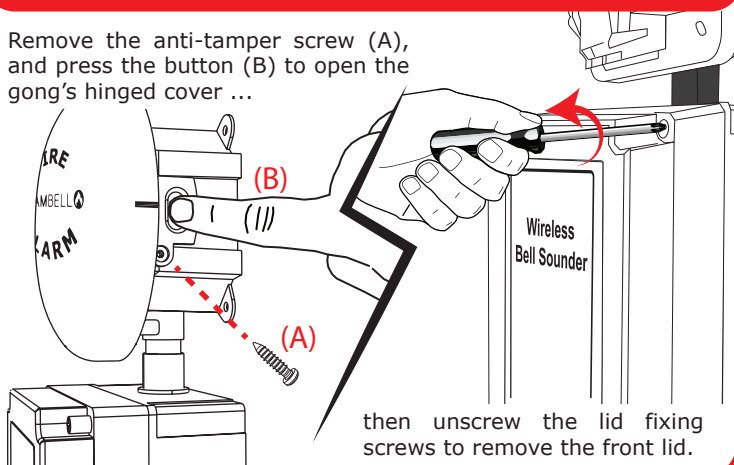
2 Components

- ① Gong
- ② Gong anti-tamper screw
- ③ 1.5mm Allen key
- ④ 4x lid fixing screws
- ⑤ Front lid
- ⑥ Wireless module
- ⑦ Battery retaining plate



3 Disassemble Device

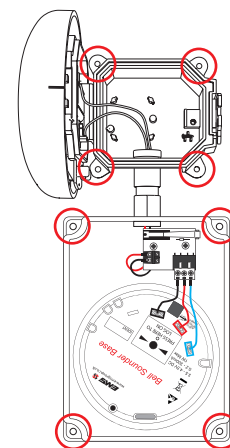
Remove the anti-tamper screw (A), and press the button (B) to open the gong's hinged cover ...



4 Fix Device To Wall

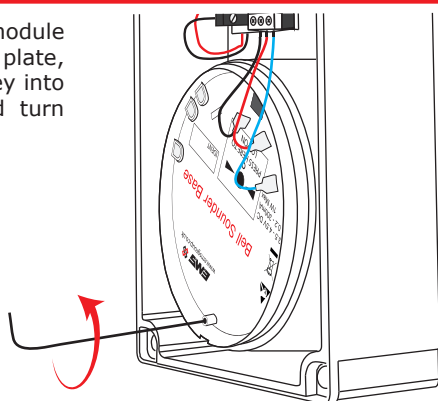
Whilst using the supplied base mounting template (MK277):

- Ensure the device is fitted in the orientation shown.
- DO NOT fit the device on an uneven surface.
- Use all eight circled mounting positions.
- Use suitable fasteners and fixings.



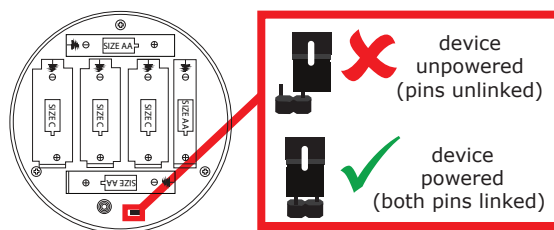
5 Unlock Wireless Module

To unlock the wireless module from the mounting plate, insert a 1.5mm Allen key into the allen key slot and turn anticlockwise as shown.



6 Power Device

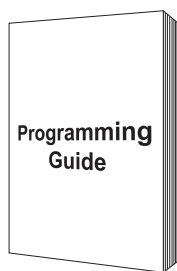
- Remove the wireless module and battery retaining plate. *Note: when removing cables, DO NOT use excessive force.*
- When fitting / replacing batteries; observe correct polarity, using only specified batteries.
- Connect the power jumper across the PIN header.



7 Configuration

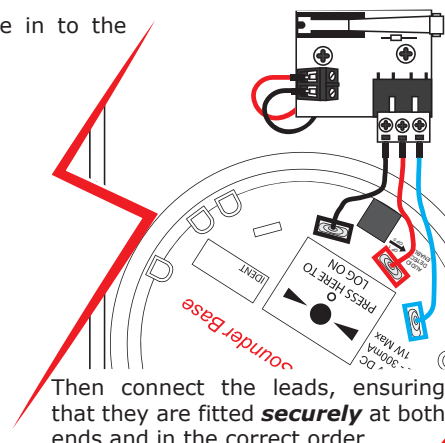
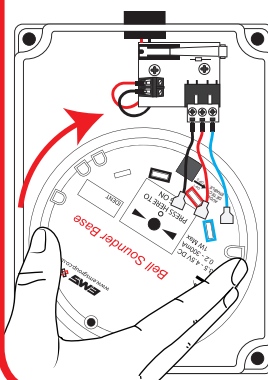
The device's loop address is configured within the menu structure of the Radio Hub.

- Refer to the programming guide for full programming information.



8 Refit Wireless Module and Leads

Refit the wireless module in to the battery retaining plate.



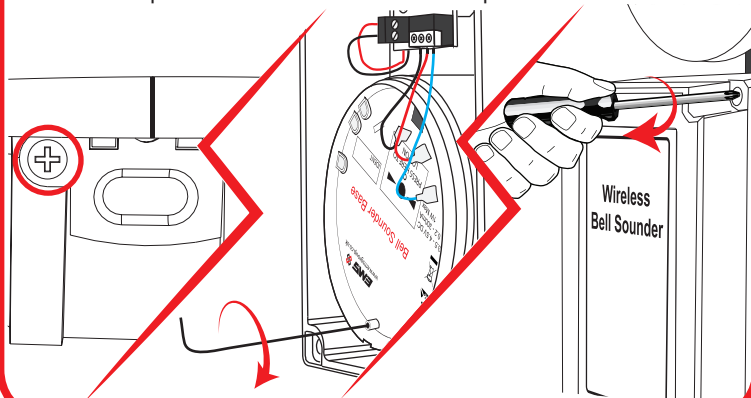
Then connect the leads, ensuring that they are fitted **securely** at both ends and in the correct order.

9 Re-assemble Device

Close the Gong and fit the anti tamper screw...

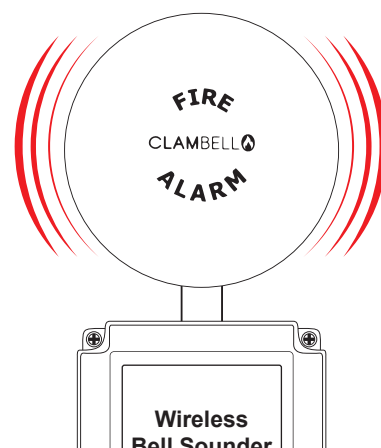
lock the wireless module in to place...

and finally, secure the lid.



10 Test Device

Test the device to ensure full functionality.



Specification

Operating Temperature	-10°C to 55°C
Storage Temperature	5°C to 30°C
Humidity	Up to 95% non-condensing
Supply	3x AA Alkaline (Panasonic LR6AD Powerline / Varta 4006 Industrial) 3x C Alkaline (Panasonic LR14AD Powerline / Varta 4014 Industrial)

CAUTION!
Fitting of an incorrect battery type invalidates the product certification and may result in poor performance.

Note: when changing batteries, check all connections are re-made correctly and fully test the device to ensure correct operation.

Operating Voltage	3.5 to 4.5Vdc
Current Consumption	0.2 to 300mA
Max Power Consumption	1W
Sounder Output	Up to 95dBA @ 1m <i>For full sounder output information, refer to the Sounder Data Document (MK309).</i>
IP Rating	IP21C
Operating Frequency	868MHz
Output Transmitter Power	Auto adjusting 0 - 14 dBm (0 - 25 mW)
Dimensions	152mm (W) 334mm (H) 101mm (D)
Location	Type A: For indoor use

Regulatory Information

Manufacturer EMS Ltd. Technology House, Herne Bay, Kent, CT6 8JZ, United Kingdom

Year of manufacture See devices serial number label

Certification **CE 19**

Certification body **0905**

CPR DoP 0359-CPR-00667

Approved to See part listing for associated products: EN54-3:2001. Incorporating Amendments Nos. 1 and 2. Fire detection and fire alarm systems. Part 3: Fire alarm devices - Sounders.

EN54-25:2008. Incorporating corrigenda September 2010 and March 2012. Fire detection and fire alarm systems. Part 25: Components using radio links.

European union directives Hereby, EMS declares that the radio equipment type Wireless Bell Sounder is in compliance with Directive 2014/53/EU. The full text of the EU declaration of conformity is available at the following internet address: www.emsgroup.co.uk



2012/19/EU (WEEE directive): Products marked with this symbol cannot be disposed of as unsorted municipal waste in the European Union. For proper recycling, return this product to your local supplier upon purchase of equivalent new equipment, or dispose of it at designated collection points. For more information see www.recyclethis.info

Dispose of your batteries in an environmentally friendly manner according to your local regulations.