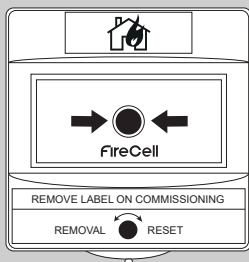


# Wireless Manual Call Point (Apollo Front)

## Installation Guide



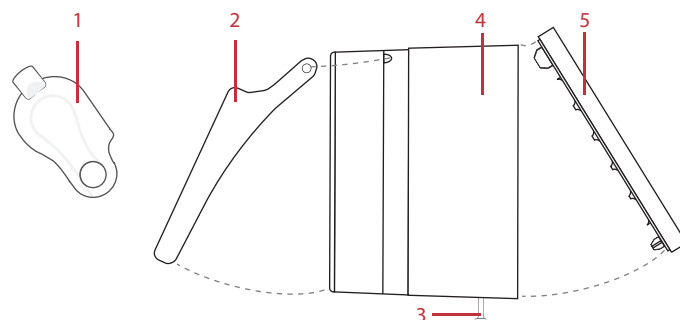
### 1 Pre installation



Installation must conform to applicable local installation codes and should only be installed by a fully trained competent person.

- Ensure that the device is installed as per the site survey.
- The use of a non-metallic spacer should be considered if mounting the device on to a metal surface.
- Do NOT Press the Log On button on a pre-programmed device, as this will cause communication with the Control Panel to be lost. Should this happen, delete the device from the system and add it back on.
- This device contains electronics that may be susceptible to damage from Electrostatic Discharge (ESD). Take appropriate precautions when handling electronic boards.

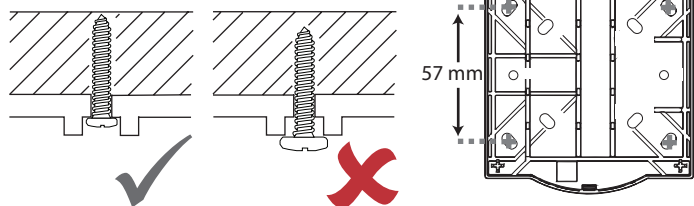
### 2 Components



1 Reset key, 2 Transparent cover, 3 Fixing screw, 4 Wireless call point, 5 Mounting plate

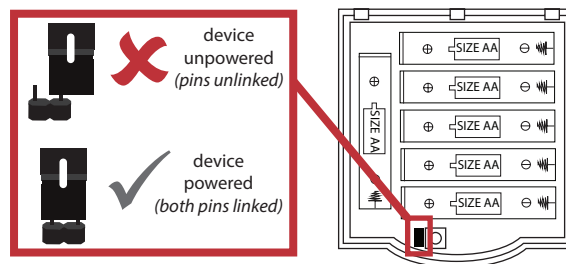
### 3 Fix mounting plate

- Remove the mounting plate from the wireless call point. See Step 5 for more information on unlocking the device.
- Ensure mounting plate is fitted in the orientation shown.
- Use both mounting holes.
- Use suitable fasteners and fixings.



### 4 Power device

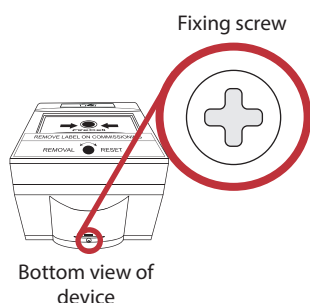
- When fitting / replacing batteries; observe correct polarity, using only specified batteries.
- Connect the power jumper across the PIN header.



- Once powered, reassemble the device.

### 5 Device locking

- To open the call point, loosen the fixing screw, then slide the call point up, away from the mounting plate.
- When reassembling, observe the hinged connection located on the devices top edge first, prior to closing the unit. Finally lock the call point into the mounting plate by tightening the fixing screw.

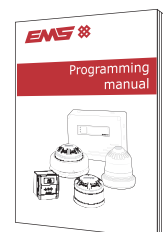


### 6 Configuration

The device's loop address is configured within the user interface's menu structure.

- Refer to the programming manual for full programming details.

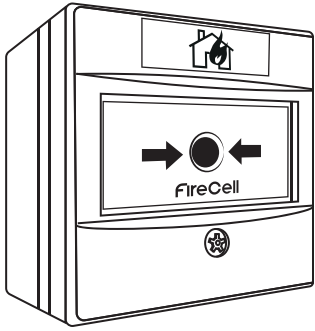
FireCell = MK98  
Fusion = TSD062  
WZM = TSD143



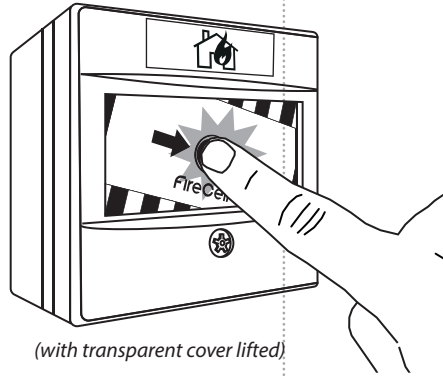
Free to download from  
[www.emsgroup.co.uk](http://www.emsgroup.co.uk)

## Device activation

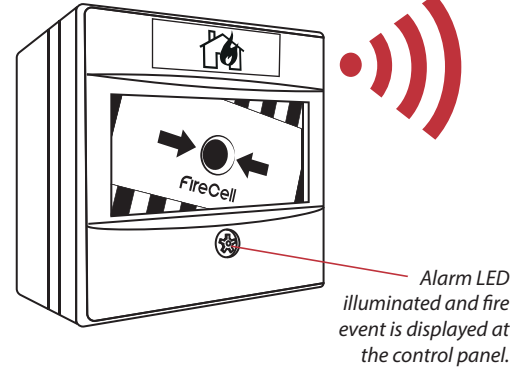
1



2

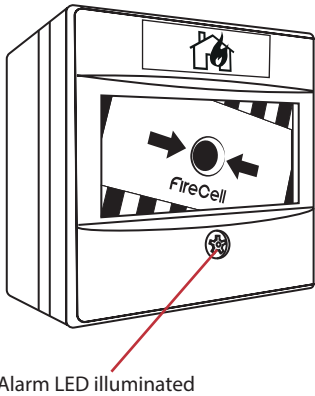


3

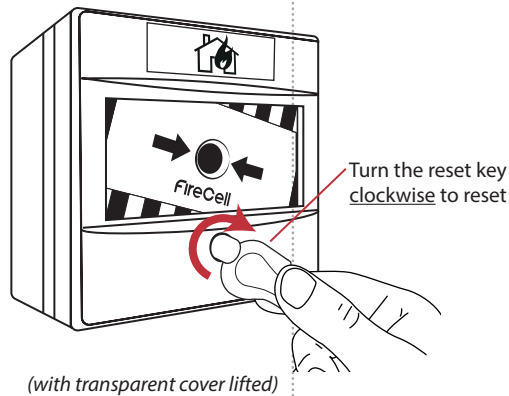


## Device resetting

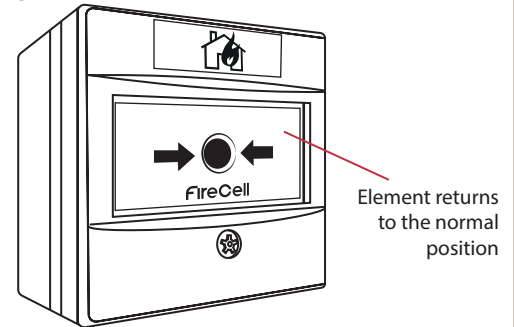
1



2



3



## Specification

<b>Operating temperature</b>	-10 to +55 °C
<b>Storage temperature</b>	5 to 30 °C
<b>Humidity</b>	0 to 95% non-condensing
<b>Supply</b>	6x AA alkaline (Panasonic LR6AD Powerline / Varta 4006 Industrial)

**CAUTION!**  
Fitting of an incorrect battery type invalidates the product certification and may result in poor performance.

<b>IP rating</b>	IP24
<b>Operating frequency</b>	868 MHz
<b>Output transmitter power</b>	Auto adjusting 0 to 14 dBm (0 to 25 mW)
<b>Signalling protocol</b>	X
<b>Dimensions (W x H x D)</b>	90 x 98 x 72.5 mm
<b>Weight</b>	0.35 kg
<b>Location</b>	Type A: For indoor use

## Regulatory information

<b>Manufacturer</b>	Carrier Manufacturing Poland Sp. z o.o. Ul. Kolejowa 24. 39-100 Ropczyce, Poland
<b>Year of manufacture</b>	See devices serial number label
<b>Certification</b>	<b>CE 19</b>
<b>Certification body</b>	<b>0905</b>
<b>CPR DoP</b>	0359-CPR-00694
<b>Approved to</b>	EN54-11:2001. Incorporating Amendment No. 1 and Corrigendum No. 1. Fire detection and fire alarm systems. Part 11: Manual call points.  EN54-25:2008. Incorporating corrigenda September 2010 and March 2012. Fire detection and fire alarm systems. Part 25: Components using radio links.
<b>European Union Directives</b>	EMS declares that this device is in compliance with Directive 2014/53/EU. The full text of the EU declaration of conformity is available at the following internet address: <a href="http://www.emsgroup.co.uk">www.emsgroup.co.uk</a>



2012/19/EU (WEEE directive): Products marked with this symbol cannot be disposed of as unsorted municipal waste in the European Union. For proper recycling, return this product to your local supplier upon purchase of equivalent new equipment, or dispose of it at designated collection points. For more information see [www.recyclethis.info](http://www.recyclethis.info)  
Dispose of your batteries in an environmentally friendly manner according to your local regulations.