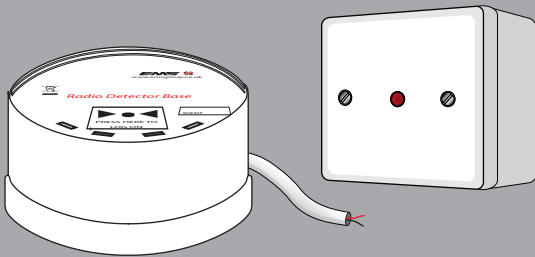


Wireless Detector c/w Remote Indicator Installation Guide



Example shown:
Model FCX-170-101

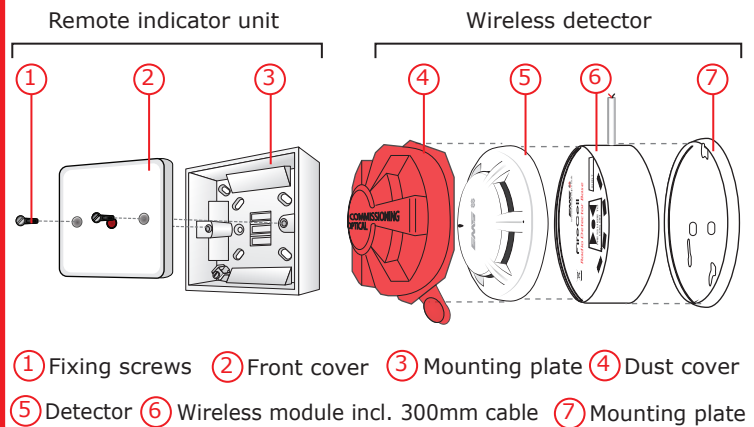
1 Pre installation



Installation must conform to applicable local installation codes and should only be installed by a fully trained competent person.

- Ensure that the device is installed as per the site survey.
- The use of a non-metallic spacer should be considered if mounting the device on to a metal surface.
- Do NOT Press the Log On button on a pre-programmed device. This will cause communication with the Control Panel to be lost. Should this happen, delete the device from the system and add it back on.
- This device contains electronics that may be susceptible to damage from Electrostatic Discharge (ESD). Take appropriate precautions when handling electronic boards.

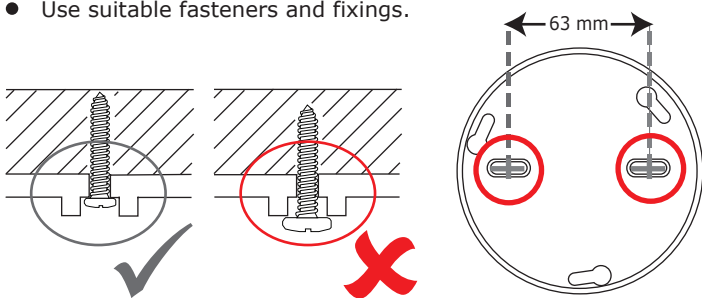
2 Components



3 Fix mounting plate

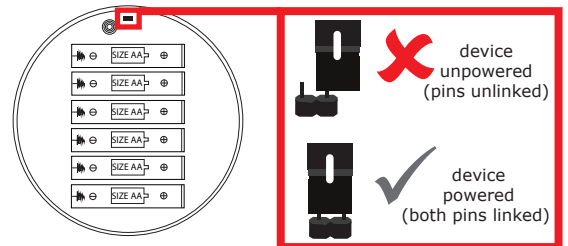
Remove the mounting plate by turning the device **ANTICLOCKWISE**, to release it from the mounting plate.

- Use both mounting holes to ensure a firm fixing.
- Use suitable fasteners and fixings.



4 Power device

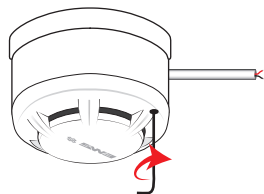
- **OBSERVE CORRECT POLARITY, USING SPECIFIED BATTERIES.**
- If fitting / re-fitting batteries; observe correct polarity, using only specified batteries.
- Connect the power jumper across the PIN header.



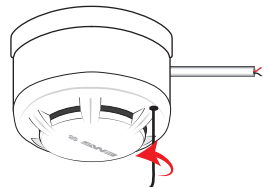
- Once powered, reassemble the device.

5 Optional device locking

- To lock the detector into the wireless module, insert a 1.5 mm allen key into the allen key slot and turn clockwise as shown.



- To unlock, insert a 1.5 mm allen key into the allen key slot and turn anticlockwise as shown.



6 Configuration

The device's loop address is configured within the user interface's menu structure.

- Refer to the programming manual for full programming details.

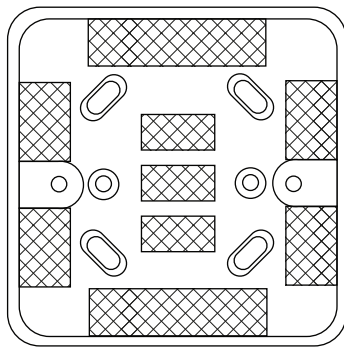
FireCell = MK98
Fusion = TSD062
WZM = TSD143

Free to download from
www.emsgroup.co.uk



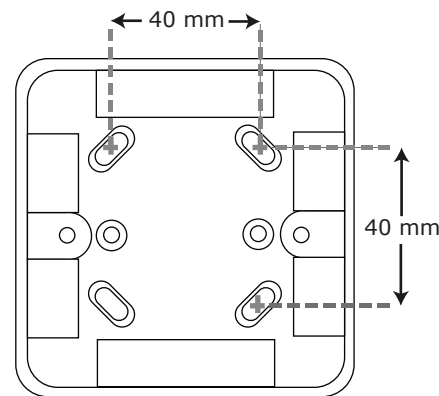
7 Remove cable entry points

- Only use knockouts shown in shaded areas.



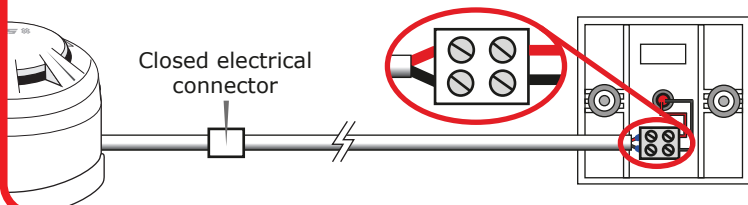
8 Fix to the wall

- Use suitable fasteners and fixings.
- Use all four mounting holes.



9 Wiring

- Connect using the two way + and - terminals, observing correct polarity.
- Pass the cable through the pre-made entry points.
- Cabling can be extended up to 30 m if required, using a closed electrical connector.
- A maximum of one detector is to be fitted to the remote indicator unit.



IMPORTANT

- Remove dust cover before use.
- The device should be tested upon installation and in accordance with local requirements.
- Testing should only be carried out by a fully trained competent person.
- The manufacturer recommends regular functional testing of at least once per annum or in accordance with local codes of practice.
- Cleaning and repairs must be undertaken by the manufacturers authorised representative.
- Do not open the case to clean inside the detector.

Specification

Operating temperature	-10 to +55 °C
Storage temperature	5 to 30 °C
Humidity	0 to 95% non-condensing
Supply	6x AA alkaline (Panasonic LR6AD Powerline / Varta 4006 Industrial)
CAUTION! Fitting of an incorrect battery type invalidates the product certification and may result in poor performance.	
IP rating	IP23
Operating frequency	868 MHz
Output transmitter power	Auto adjusting 0 to 14 dB (0 to 25 mW)
Dimensions (H x W x D)	85 x 85 x 45 mm (remote indicator unit)
Dimensions (Ø x D)	113 x 40 (detector base only)
Weight	0.15 kg (remote indicator unit) 0.40 kg (wireless detector with detector fitted)
Location	Type A: For indoor use

Regulatory information

Manufacturer	Carrier Manufacturing Polska Sp. Z o.o. Ul. Kolejowa 24. 39-100 Ropczyce, Poland
Year of manufacture	See devices serial number label
Certification	CE 10
Certification body	0905
CPR DoP	0359-CPR-0041
Approved to	EN54-25:2008.Incorporating corrigenda September 2010 and March 2012. Fire detection and fire alarm systems. Part 25: Components using radio links.
European Union directives	EMS declares that this device is in compliance with Directive 2014/53/EU. The full text of the EU declaration of conformity is available at the following internet address: www.emsgroup.co.uk



2012/19/EU (WEEE directive):
Products marked with this symbol cannot be disposed of as unsorted municipal waste in the European Union. For proper recycling, return this product to your local supplier upon purchase of equivalent new equipment, or dispose of it at designated collection points. For more information see www.recyclethis.info
Dispose of your batteries in an environmentally friendly manner according to your local regulations.