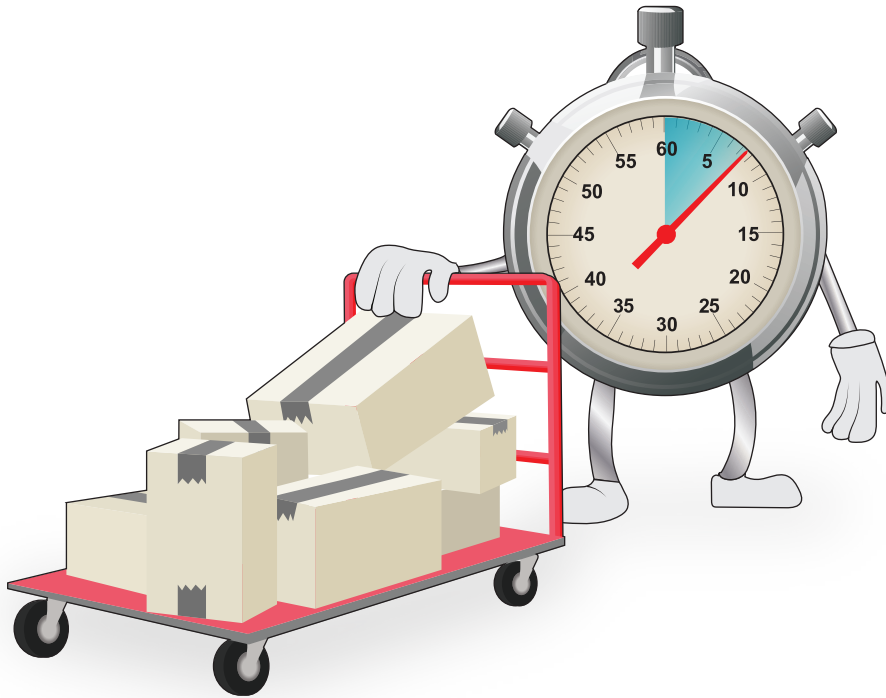
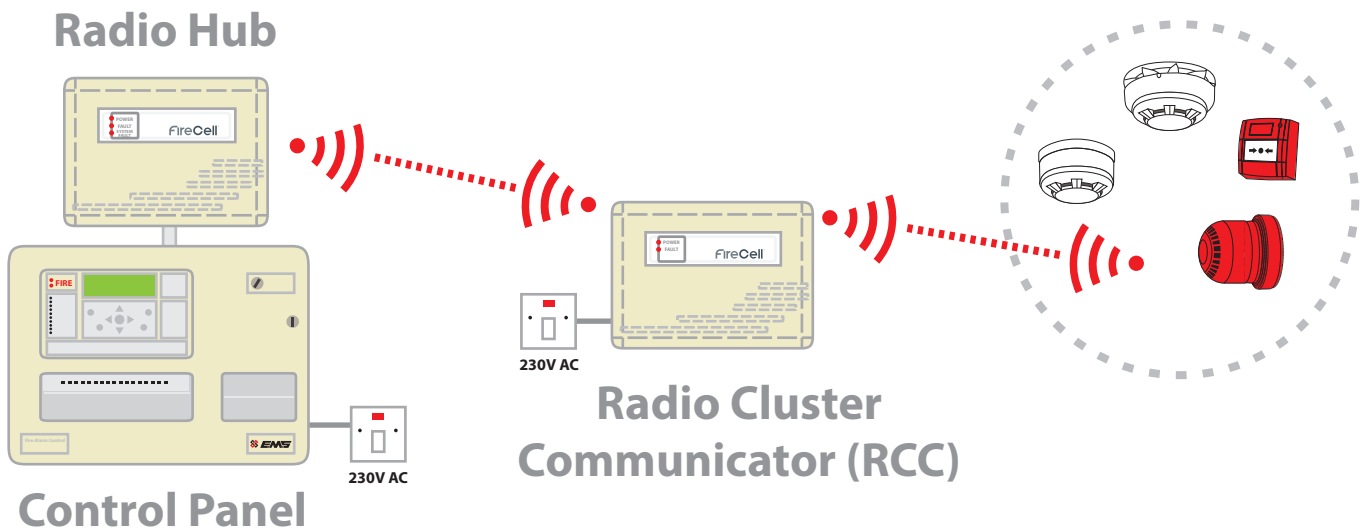


# FireCell



## FIRECELL SYSTEM QUICK START GUIDE



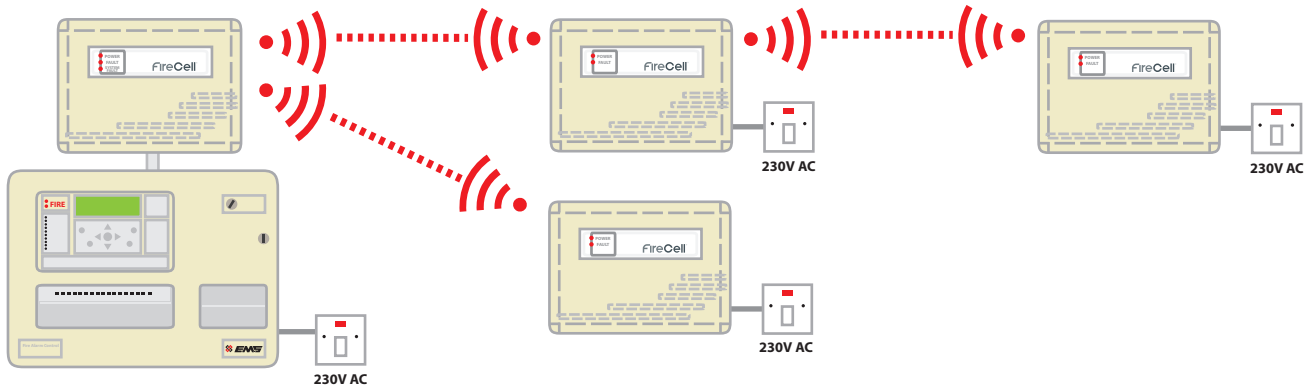
FireCell System Quick Start Guide Iss 6 - MK140 AJM  
[www.emsgroup.co.uk](http://www.emsgroup.co.uk)





## Step 2 Install the RCCs:

The survey report will also detail the locations of the Radio Cluster Communicators (RCCs).



See FireCell Instruction Pack for more information.

## Step 3 Log On the RCCs:

Go to Step 4 if the system has been supplied fully programmed.

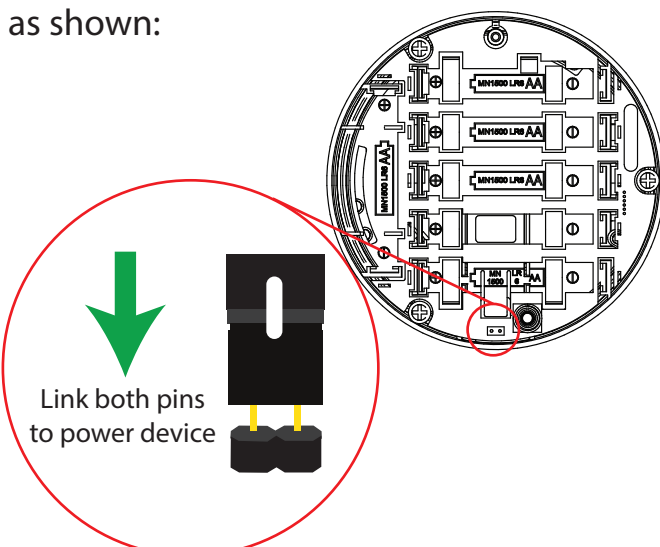
The RCCs can be logged on to the system using the RCCs ident number which is located on the side of the unit.

See FireCell Instruction Pack for more information.



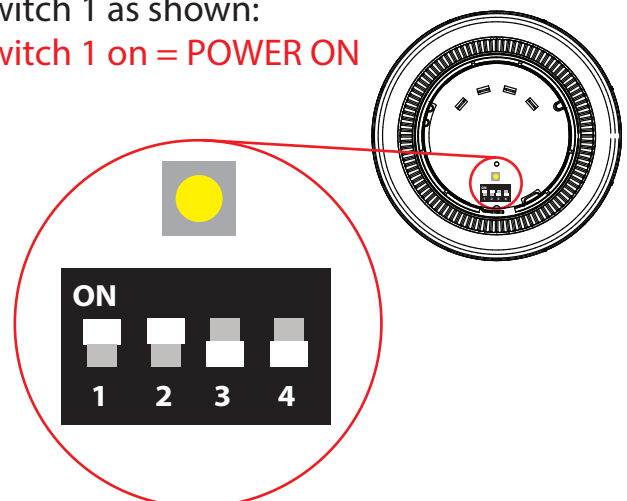
## Step 4 Power Up the Devices:

Detectors, Sounders, Callpoints and Input/Output Units have power jumpers as shown:



Combined Sounder Detectors are powered by changing the orientation of Switch 1 as shown:

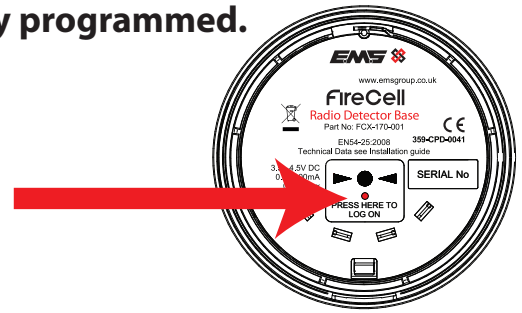
Switch 1 on = POWER ON



## Step 5 Log on the Radio Devices:

**Go to Step 6 if the system has been supplied fully programmed.**

The device can now be logged on to the system. This can be achieved using the log on button or ident method. The log on button is located inside the unit.

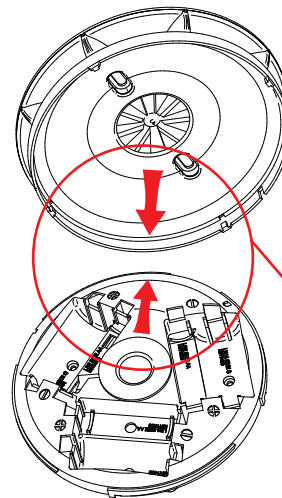


See FireCell Instruction Pack for more information

## Step 6 Install the Radio Devices:

**Note:** When installing Combined Sounder Detectors, it is important that the tamper alignment markers are properly positioned to ensure correct operation and to prevent unnecessary tamper faults.

See FireCell Instruction Pack for more information.



Align tamper arrows **THEN** turn to lock into place




## Step 7 Program the Control Panel:

**Note: This step is not necessary if the system has been supplied fully programmed.**

The Radio Hub, RCCs and all radio devices must now be added to the Control Panel ensuring the loop number and addresses programmed at the Radio Hub correspond to that programmed at the Control Panel. This can also be achieved using the Loop Explorer computer program.

See FireCell Instruction Pack for more information.



 [www.emsgroup.co.uk](http://www.emsgroup.co.uk)  
 +44 (0) 1227 369570  
 [enquiries@emsgroup.co.uk](mailto:enquiries@emsgroup.co.uk)



Fire Industry Association



Intertek



The information contained within this literature is correct at time of publishing. EMS reserves the right to change any information regarding products as part of its continual development enhancing new technology and reliability. EMS advises that any product literature issue numbers are checked with its head office prior to any formal specification being written.