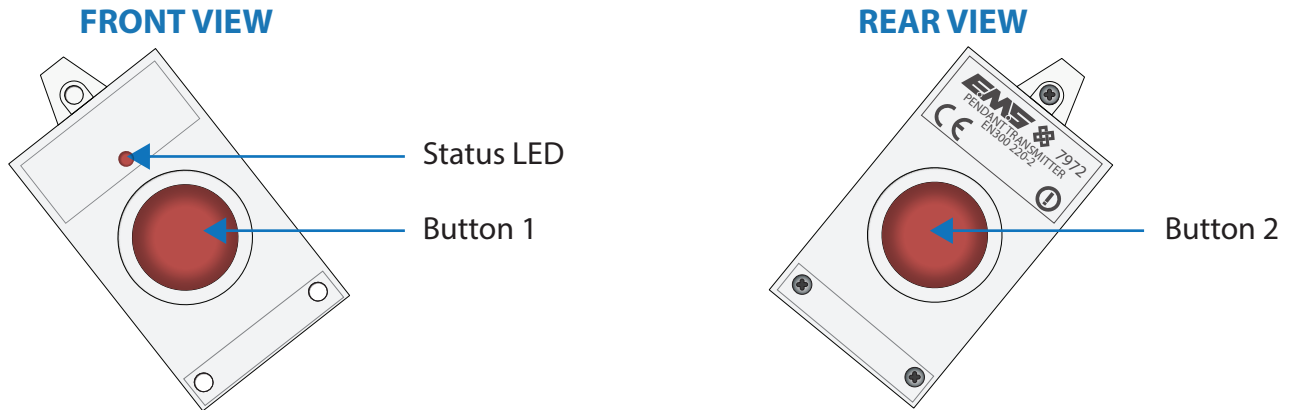


7972 OPERATING INSTRUCTIONS

Introduction

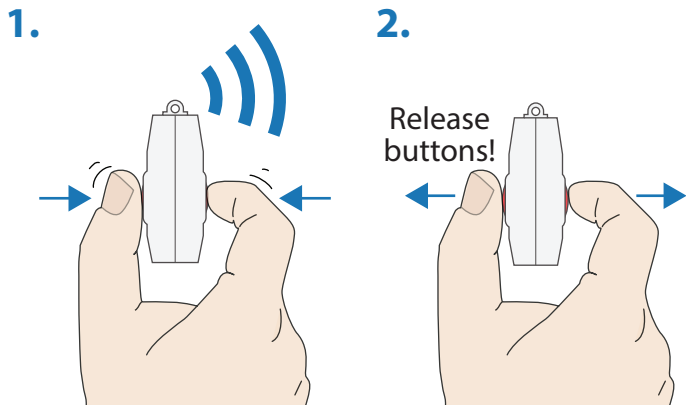
The 7972 is a pendant transmitter that can be worn on a lanyard or carried on a key fob. It is designed for use with the EMS Iris+ 7256 Receiver, in BS8243 mode. Refer to the Iris+ alarm verification programming manual (TSD249) for full details, including BS8243 mode selection and full programming guidance.

Details of the pendant transmitters features and its operation are outlined below:

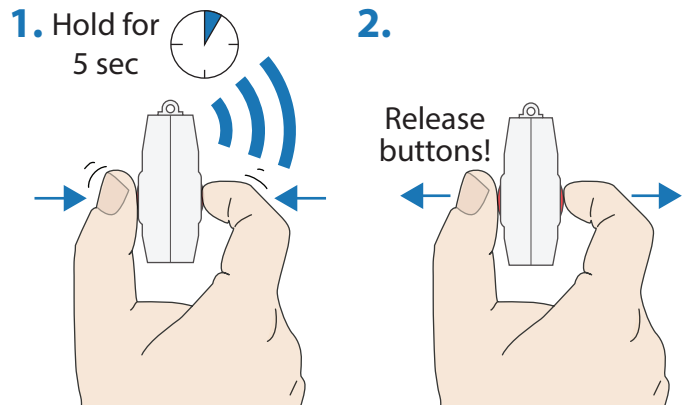


Generating Alarm Conditions (using one pendant transmitter)

First Stage (Unconfirmed)



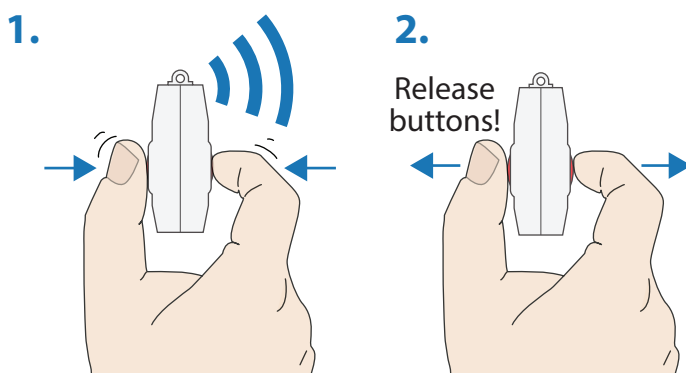
Second Stage (Confirmed)



Generating Alarm Conditions (using two pendant transmitters)

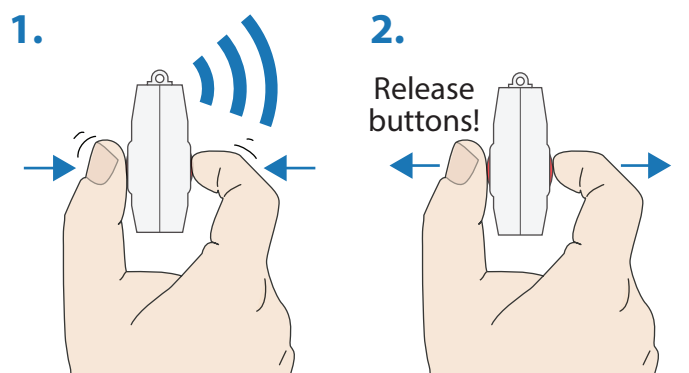
First Stage (Unconfirmed)

Using pendant transmitter #1



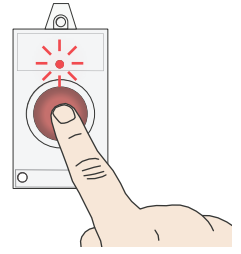
Second Stage (Confirmed)

Using pendant transmitter #2



Alarm Latch Memory

The alarm latch can be viewed by pressing and holding ONE button (either Button 1 or Button 2). If a full alarm condition has been initiated by the pendant transmitter within the last 24 hours, the Status LED will illuminate.



Battery Low Indication

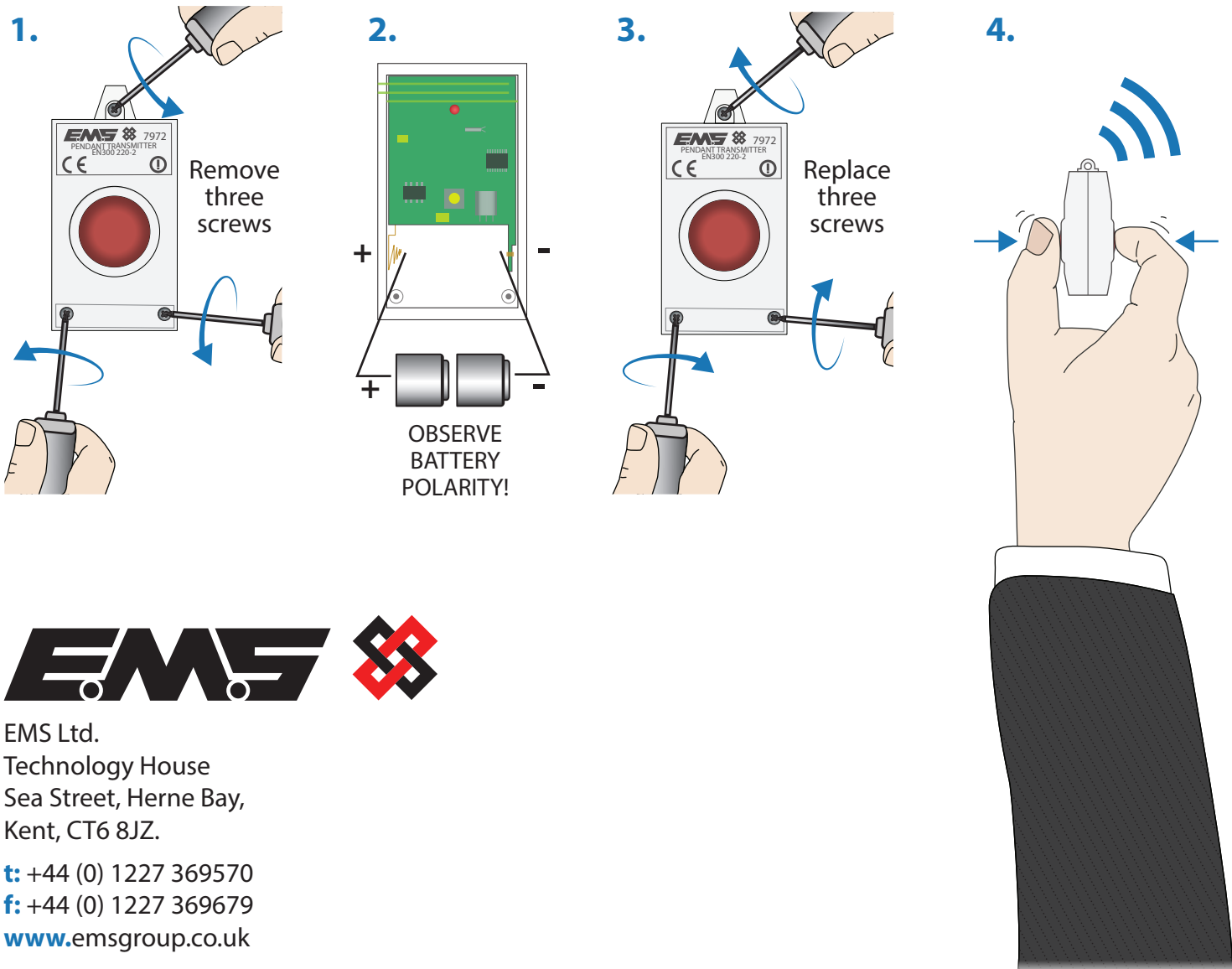
The battery condition is sent periodically, with the device's regular status signal. A battery low fault will be indicated at the receiver when batteries require replacement.

Batteries

The pendant transmitter is supplied with 2 x 1/3 N Lithium Manganese (Li-Mn) Duracell batteries. Average battery life is 12 months (dependant on usage) and should be replaced upon the annual maintenance.

Battery Replacement

To replace the batteries, remove the screw adjacent to the necklet hole, and the two in the opposite corners, using a Philips screwdriver (size zero). Remove the top half of the case by lifting it up. Batteries must be inserted using correct polarity as shown on the polarity label. Replace the case and screw together. The pendant transmitter must be retested to guarantee correct battery fitting and device functionality.



EMS Ltd.
Technology House
Sea Street, Herne Bay,
Kent, CT6 8JZ.

t: +44 (0) 1227 369570

f: +44 (0) 1227 369679

www.emsgroup.co.uk