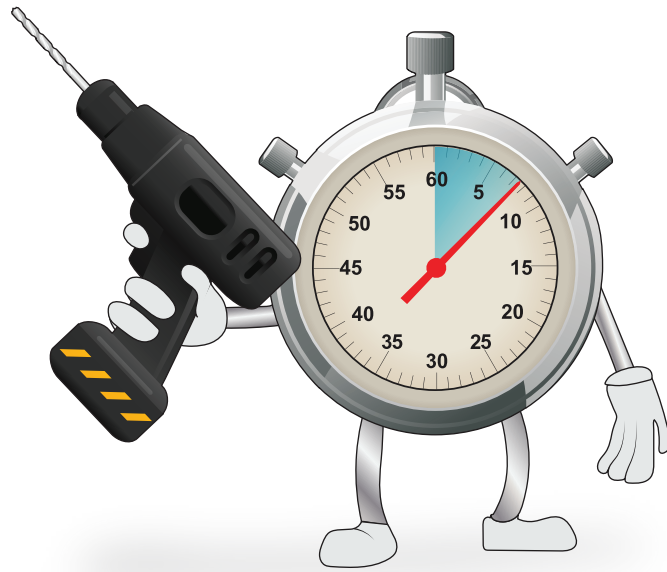
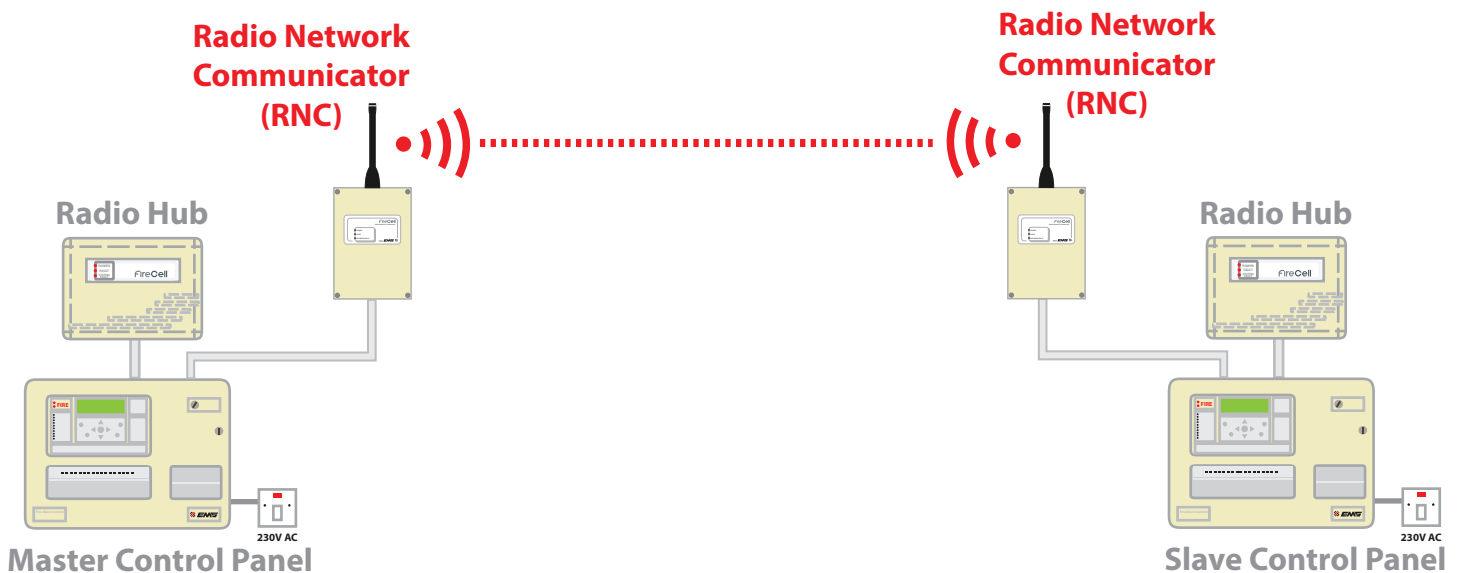


FireCell



RADIO NETWORK COMMUNICATOR (RNC) *For Syncro/Syncro AS*

QUICK START GUIDE

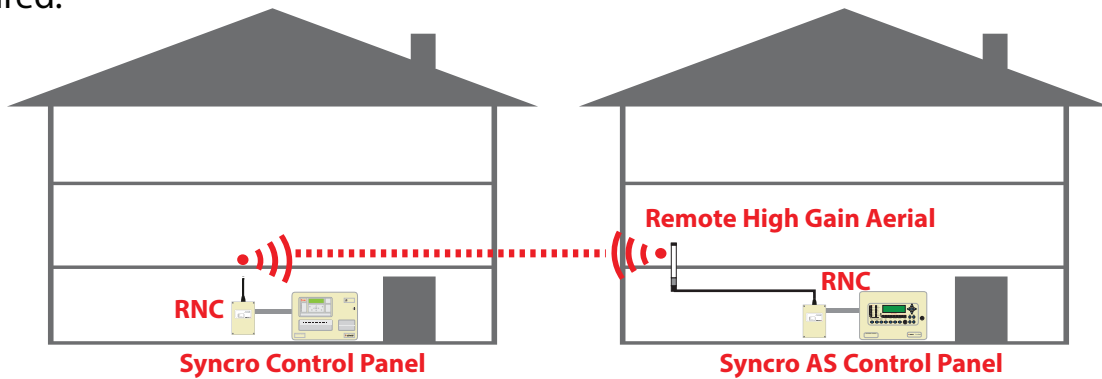


RNC Quick Start Guide Iss 7 - TSD106 AJM
www.emsgroup.co.uk

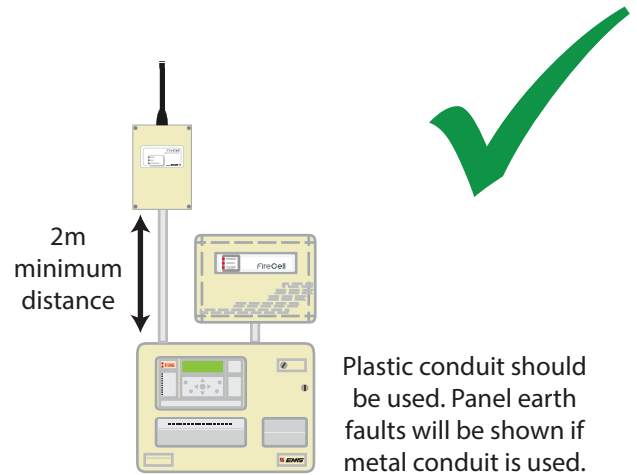
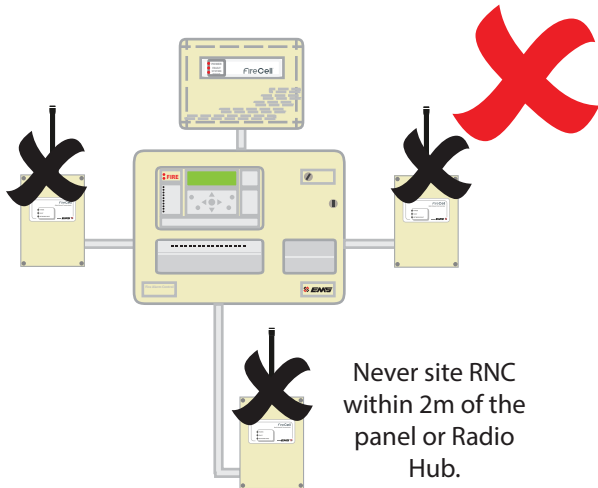
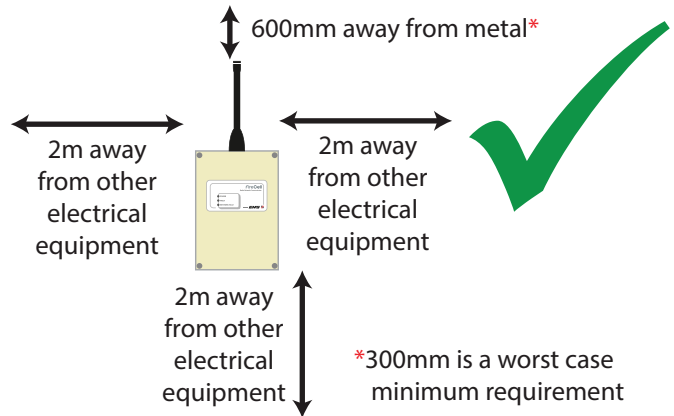
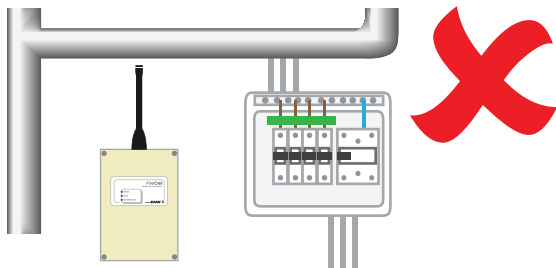


Step 1 Identify RNC Locations:

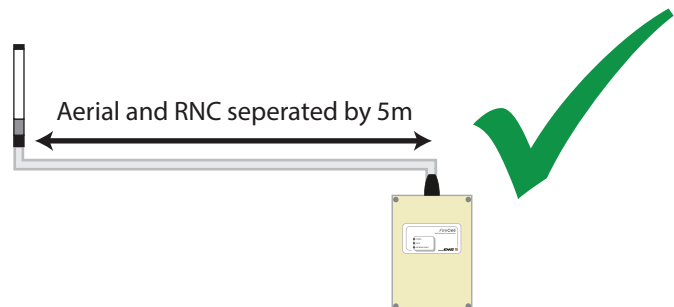
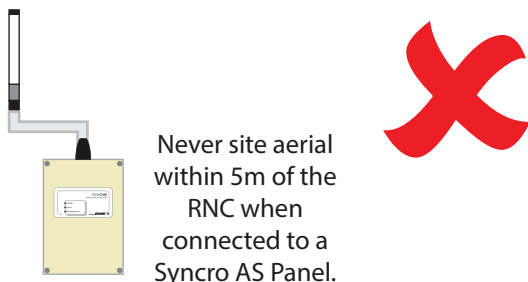
If a radio survey has already been carried out, the survey will detail the recommended location of the Radio Network Communicators (RNCs) and also any aerial positions if required.



When connecting an RNC to a Syncro 2 or 4 loop Panel, the recommended distance between metal objects from the aerial is 600mm. The recommended distance to any other electrical equipment is 2m.

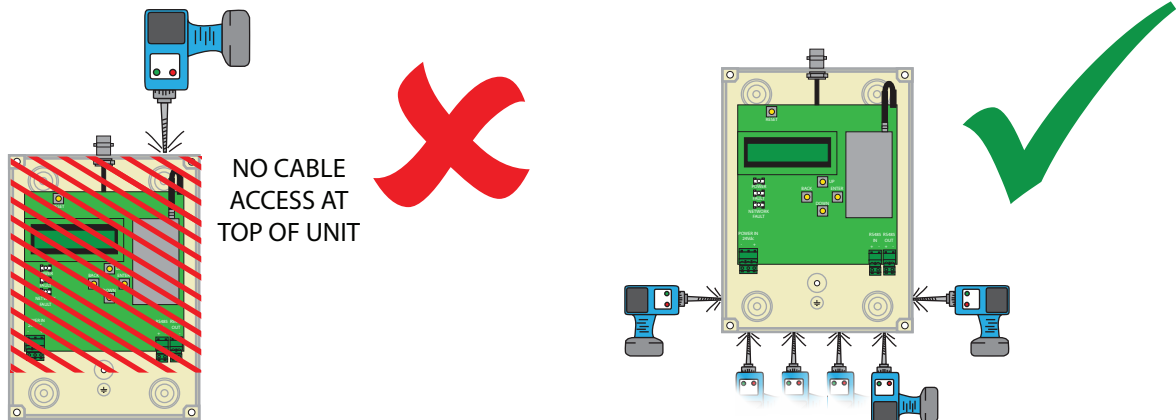


When connecting an RNC to a Syncro AS 1 or 2 Loop Panel, the same rules apply as set out above. In addition, a high gain aerial must also be fitted and sited a minimum distance of 5m from the RNC.



Step 2 Identify Cable Entry Location:

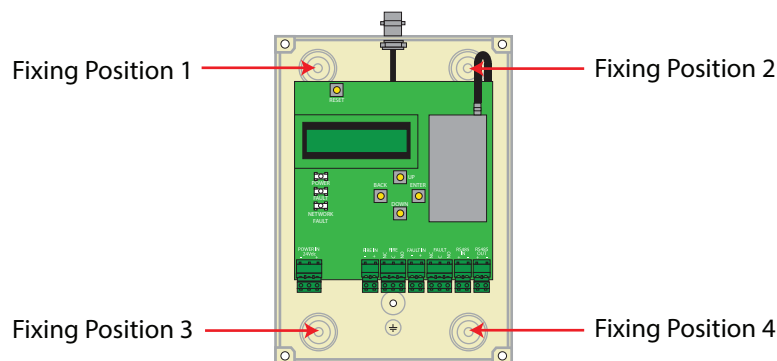
Open the unit to show the inner PCB. The cable entries can now be made. See entry points below:



ALL CABLES TO BE ROUTED NEATLY AT THE BOTTOM OF THE BOX, AND NOT OVER THE PCB BOARD

Step 3 Fix The RNC To The wall:

The unit can now be fixed to the wall. The RNCs fixing positions are as below:

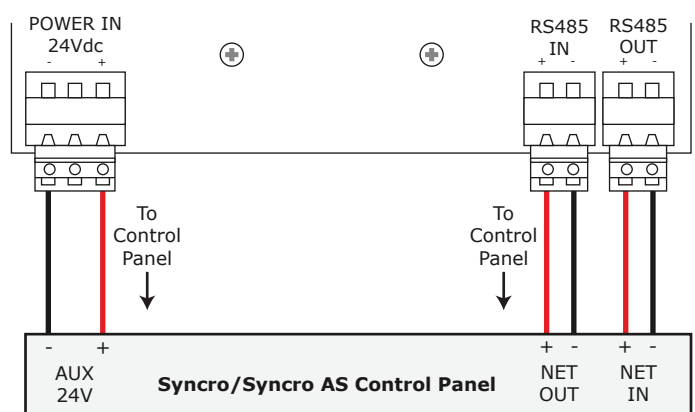


Step 4 RNC To Control Panel Wiring:

The cable must be passed through the entry points provided. Connections are detailed below:

RS485 BUS & POWER CONNECTIONS

| CONTROL PANEL | | REMOTE NETWORK COMMUNICATOR | |
|---------------|---|-----------------------------|---|
| NET IN | + | RS485 OUT | + |
| NET IN | - | RS485 OUT | - |
| NET OUT | + | RS485 IN | + |
| NET OUT | - | RS485 IN | - |
| AUX 24V | + | POWER IN | + |
| AUX 24V | - | POWER IN | - |



Please Note: Care must be taken to ensure that the all connections are made correctly before applying power to the unit. Damage may occur if cables are incorrectly connected.

Step 5 RNC Configuration:

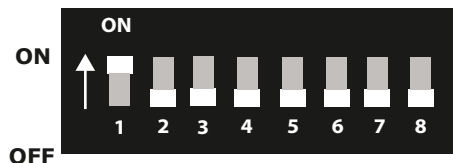
Setting up of the RNC is carried out by completing the following:

| MASTER PANEL'S RNC | SLAVE PANEL'S RNC |
|---|---|
| <p>STEP A: At the Control Panel, Set Network Card Address to 1. See 'Network Card Setup'.</p> | <p>STEP A: At the Control Panel, Set Network Card Address between 2 & 16. See 'Network Card Setup'.</p> |
| <p>STEP B: At the RNC, 'Set Node Number' to 1 via menu. From front Screen> Node Setup> Set Node Number NOTE: The Network Card & the RNC Addresses must match.</p> | <p>STEP B: At the RNC, 'Set Node Number' between 2 & 16 via menu. From front Screen> Node Setup> Set Node Number NOTE: The Network Card & the RNC addresses must match.</p> |
| <p>STEP C: Set Site ID via menu. From front Screen> Node Setup> Set Site ID NOTE: Site id is taken from this RNC's ident label.</p> | <p>STEP C: Set Site ID via menu. From front Screen> Node Setup> Set Site ID NOTE: Site id must match Master Panel RNC's ident.</p> |

Once steps A to C have been carried out at all RNCs go to step D.

Step D: From the Master Panels RNC menu a Configure System action must be performed **From front Screen> Node Setup> Configure System**

NETWORK CARD SETUP



Where the above switch is set to address number 1

| | SWITCH NUMBERS | | | | | | | |
|------|----------------|-----|-----|-----|-----|-----|-----|-----|
| | 1 | 2 | 3 | 4 | 5 | 6 | 7 | 8 |
| 1 = | ON | OFF | OFF | OFF | OFF | OFF | OFF | OFF |
| 2 = | OFF | ON | OFF | OFF | OFF | OFF | OFF | OFF |
| 3 = | ON | ON | OFF | OFF | OFF | OFF | OFF | OFF |
| 4 = | OFF | OFF | ON | OFF | OFF | OFF | OFF | OFF |
| 5 = | ON | OFF | ON | OFF | OFF | OFF | OFF | OFF |
| 6 = | OFF | ON | ON | OFF | OFF | OFF | OFF | OFF |
| 7 = | ON | ON | ON | OFF | OFF | OFF | OFF | OFF |
| 8 = | OFF | OFF | OFF | ON | OFF | OFF | OFF | OFF |
| 9 = | ON | OFF | OFF | ON | OFF | OFF | OFF | OFF |
| 10 = | OFF | ON | OFF | ON | OFF | OFF | OFF | OFF |
| 11 = | ON | ON | OFF | ON | OFF | OFF | OFF | OFF |
| 12 = | OFF | OFF | ON | ON | OFF | OFF | OFF | OFF |
| 13 = | ON | OFF | ON | ON | OFF | OFF | OFF | OFF |
| 14 = | OFF | ON | ON | ON | OFF | OFF | OFF | OFF |
| 15 = | ON | ON | ON | ON | OFF | OFF | OFF | OFF |
| 16 = | OFF | OFF | OFF | OFF | ON | OFF | OFF | OFF |

Step 6 Signal Checks:

Once configured, all RNCs will require a signal level check to ensure they are at an adequate level. The level received must be 30dB or greater.

From front Screen> Node Status> Signal Level



www.emsgroup.co.uk

+44 (0) 1227 369570

enquiries@emsgroup.co.uk



Fire Industry Association



The information contained within this literature is correct at time of publishing. EMS reserves the right to change any information regarding products as part of its continual development enhancing new technology and reliability. EMS advises that any product literature issue numbers are checked with its head office prior to any formal specification being written.