

# 7500 OPERATING INSTRUCTIONS

## Introduction

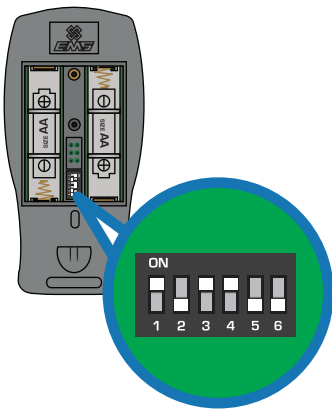
The 7500 is a hand held panic alarm transmitter that can also be worn on the belt, or located in a fixed position using a mounting bracket. There are a number of handheld panic alarms available providing differing actions to meet specific site requirements.

The 7500/2 is fully approved for use with BS8243 Grade 2 security systems where Police response is required, whilst the 7500/2/T and 7500/3/T are ideal where a “man down” alert is needed to protect lone workers.

Refer to the Iris+ Installation Guide (MK192) for details on adding the device to the system.

## Transmitter Switch Settings

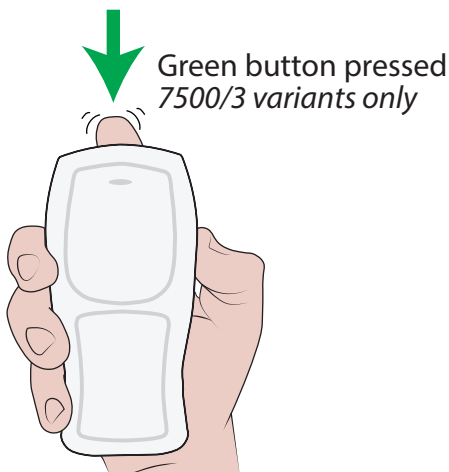
The 7500 transmitter has 6 internal switches located under the battery cover, as shown below. The following table outlines the available settings:



Switch No	Function	OFF Position	ON Position
1	Vibrate confirmation	Vibrate disabled	Vibrate enabled
2	Panel compatibility	Iris+ / 1000	7703
3	Man down enable (7500/3/T & 7500/2/T only)	Man down disabled	Man down enabled
4	Call-in transmission	Call-in disabled	Call-in enabled
5	Standard button timing / RBOS button timing	Standard mode	Non-standard mode
6	Enhanced configuration	Standard operation	N/A

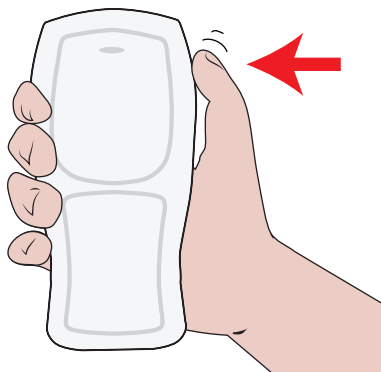
## Transmitter Operation

The 7500 transmitter when set for **opposed action** alarm activation in **default mode**, is outlined below:



≡ Local alarm initiated

One red button pressed



≡ No effect

Both red buttons pressed

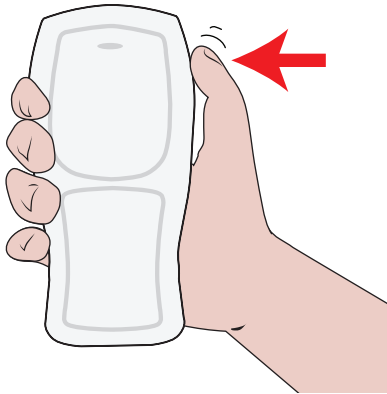


≡ Full alarm initiated

## Transmitter Operation - Police response mode (Iris+ BS8243)

The 7500/2 transmitter when set for **opposed action** alarm activation in **Police response mode**, operates as outlined below:

One red button pressed



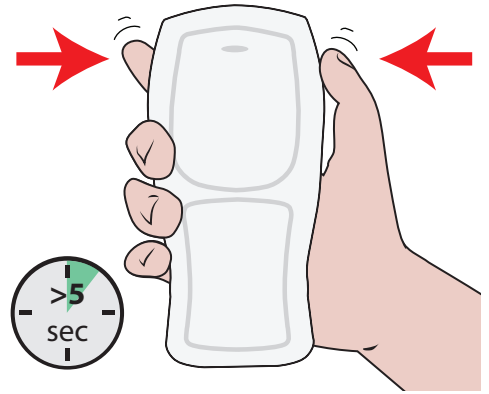
= No effect

Both red buttons (*momentarily*)



= Stage 1 alarm

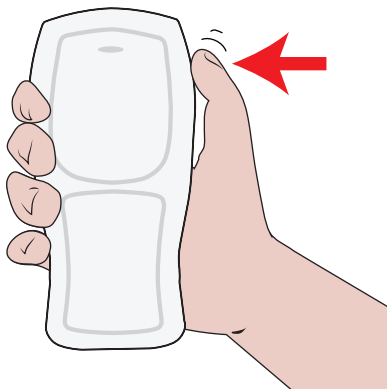
**Followed by** - Both red buttons pressed (*for over 5 seconds*)



= Verified alarm initiated

### ALTERNATIVELY:

One red button pressed



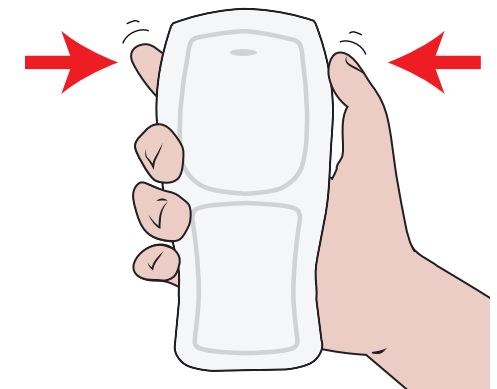
= No effect

Both red buttons (*momentarily*)



= Stage 1 alarm

**Followed by**  
both red buttons (*momentarily*)  
**\*on a different device\***



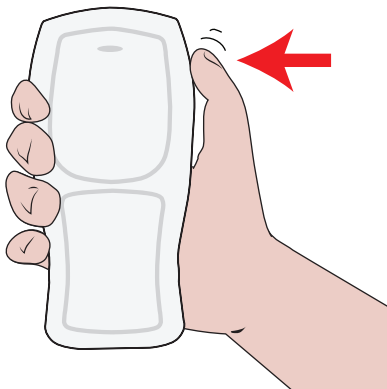
= Verified alarm initiated

**Note: the second verified alarm activation is required within the verification time programmed. This is programmable between 8 and 20 hours. Refer to the Iris+ alarm verification programming manual (TSD249) for full details, including BS8243 mode selection and full programming guidance.**

## Alternative Transmitter Operation - non standard mode (switch 5)

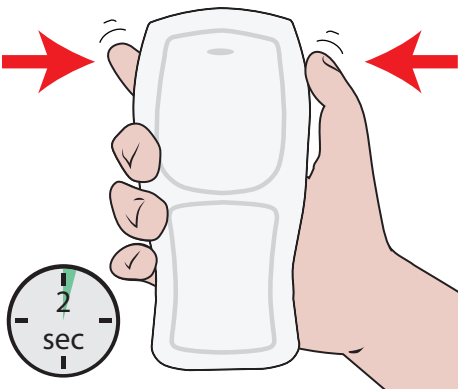
The 7500 transmitter when set for **opposed action** alarm activation in **non-standard mode**, operates as outlined below:

One red button pressed



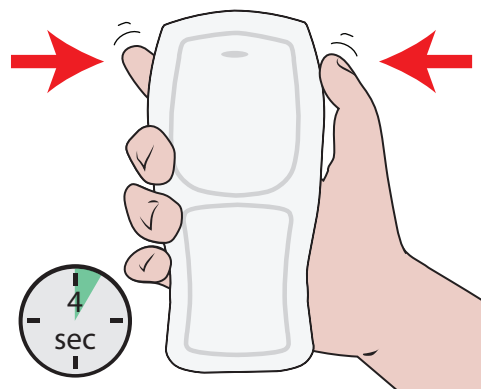
= No effect

Both red buttons (*for 2 seconds*)



= Full alarm initiated

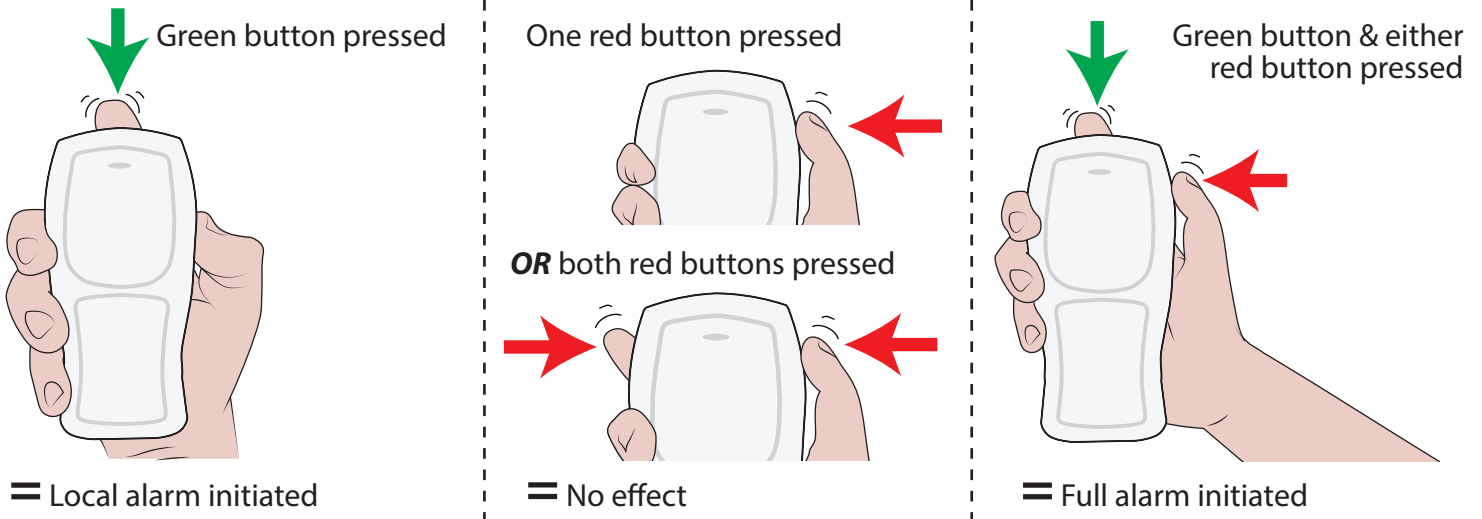
Both red buttons (*for 4 seconds*)



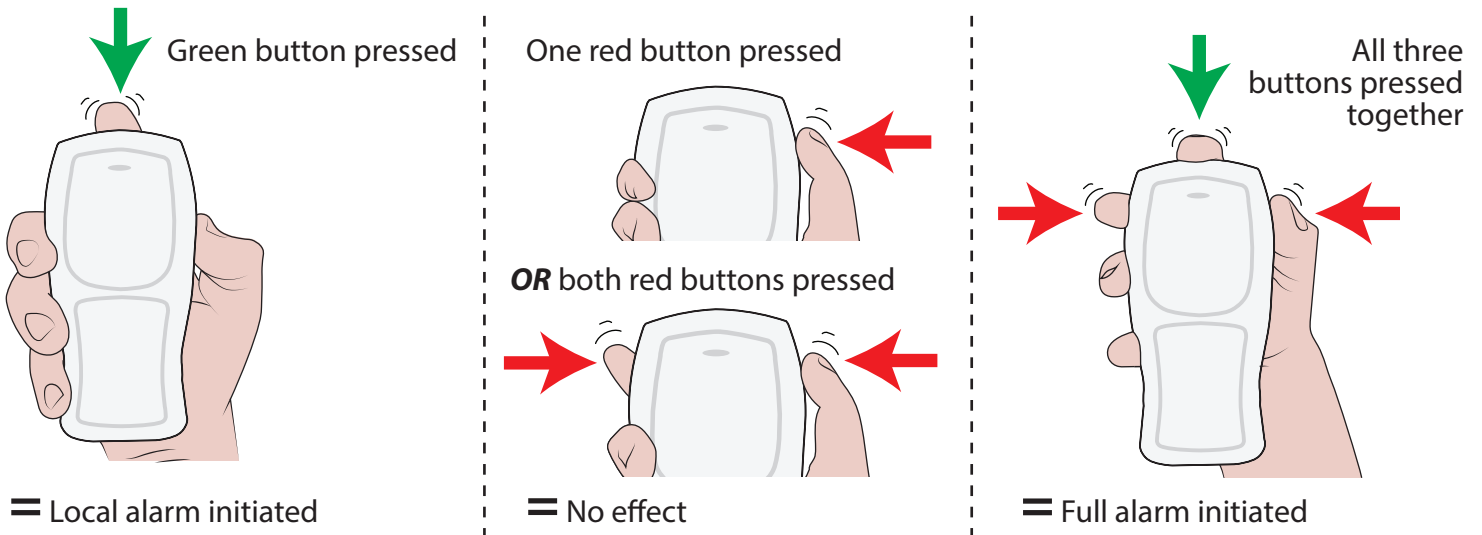
= Verified alarm initiated

## Alternative Transmitter Operations - 7500/3 variants only

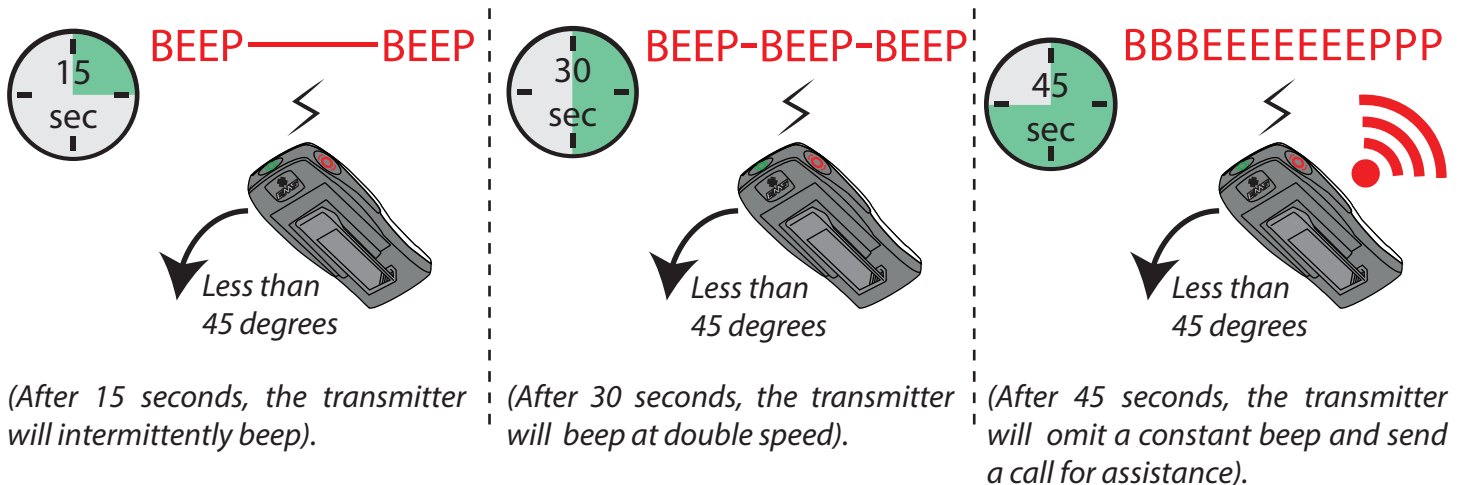
The 7500/3 transmitter when set for **non-opposed** alarm activation in **standard mode**, operates as outlined below:



The 7500/3 transmitter when set for **triple action** alarm activation in **standard mode**, operates as outlined below:



## Man Down Operation - on 7500/2/T & 7500/3/T only



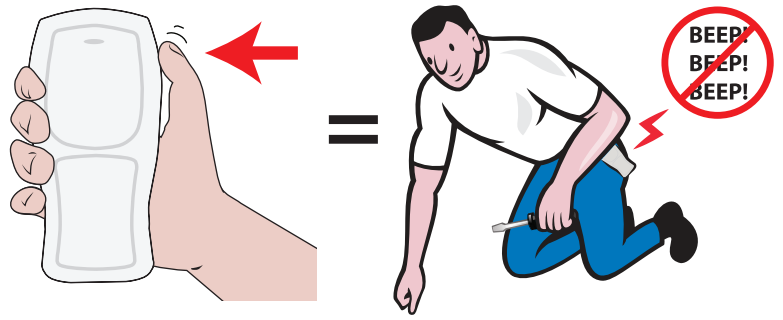
## Cancelling man down assistance

If the transmitter starts beeping whilst you are working, man down assistance can be temporarily disabled for 1 minute.

Simply **PRESS ONE RED BUTTON** as shown.

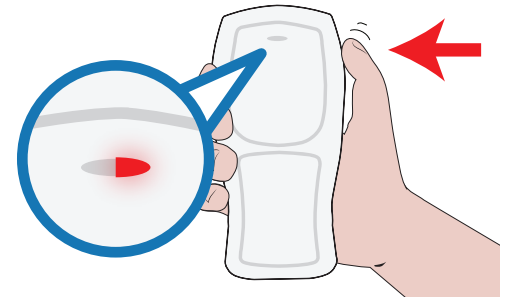
The transmitter will stop beeping and no alarm will be raised.

Alternatively, man down assistance can be cancelled by returning the 7500 transmitter to a vertical orientation.



## Alarm Latch Memory

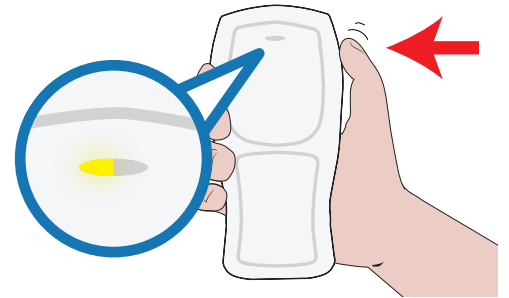
The red LED illuminating as shown, upon a single red button, indicates that a full alarm has been initiated from the hand push within the last 24 hours.



## Battery Low Indication

The yellow LED illuminating as shown, upon a single red button, indicates that the batteries voltage in the handpush is low.

When using the 7500 in conjunction with an Iris+ receiver, this information will also be reported on the LCD display.

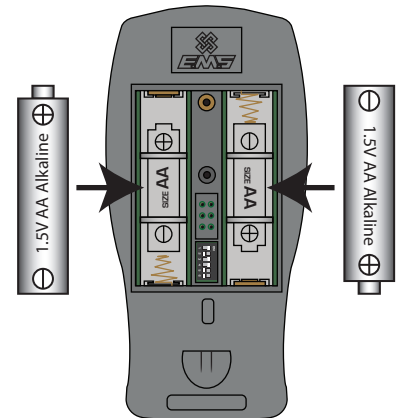


## Battery Replacement

The 7500 transmitter requires 2x AA Alkaline (Panasonic LR6AD Powerline / Varta 4006 Industrial) batteries. Only use specified batteries.

Carefully replace batteries, whilst observing correct polarity.

After replacing the batteries, the device must be retested to guarantee correct battery fitting and device functionality.



**OBSERVE CORRECT POLARITY!**



EMS Ltd.  
Technology House  
Sea Street, Herne Bay,  
Kent, CT6 8JZ.

t: +44 (0) 1227 369570

f: +44 (0) 1227 369679

[www.emsgroup.co.uk](http://www.emsgroup.co.uk)